

# SHANKS FOR FEMALE CAPS

T.J. Snow Co. (423) 894-6234; FAX: (423) 490-2417 (authorized distributor CMW Inc.)



CMW shanks are precision manufactured from CMW®3 class 2 material to provide a high quality mount for cap type electrodes. They are designed for high strength and electrical conductivity.

These shanks are shown with a blind water hole for cap replacement without shutting off water. Shanks with through water holes are available, by adding "TH" to the basic part number. Example; MP30212TH.

Shanks for female caps with #4 RWMA tapers			Bent offset shanks for female caps with #4 RWMA tapers			
PART NO.*	A DIM.	B DIM.	PART NO.*	A DIM.	B DIM.	C DIM.
MP3012	1.25	1.75	MP3019-08	2.62	3.28	.50
MP3013	1.50	2.00	MP3019-12	2.56	3.22	.75
MP3014	1.75	2.25	MP30112-12	2.81	3.47	.75
MP3015	2.00	2.50	MP30112-16	2.37	3.03	1.00
MP3016	2.25	2.75	MP30116-16	2.87	3.53	1.00
MP3017	2.50	3.00	MP30116-20	2.60	3.28	1.25
MP3018	2.75	3.25				
MP3019	3.00	3.50				
MP30112	3.25	3.75				
MP30114	3.50	4.00				
MP30116	3.75	4.25				
MP30118	4.00	4.50				

Shanks for female caps with #5 RWMA tapers			Bent offset shanks for female caps with #5 RWMA tapers			
PART NO.*	A DIM.	B DIM.	PART NO.*	A DIM.	B DIM.	C DIM.
MP3023	1.46	2.00	MP3029-08	2.58	3.20	.50
MP3024	1.71	2.25	MP3029-12	2.60	3.12	.75
MP3025	1.96	2.50	MP30212-12	2.77	3.44	.75
MP3026	2.21	2.75	MP30212-16	2.33	3.00	1.00
MP3027	2.46	3.00	MP30214-12	3.00	3.66	.75
MP3028	2.71	3.25	MP30214-16	2.81	3.48	1.00
MP3029	2.96	3.50	MP30216-16	2.83	3.49	1.00
MP30212	3.21	3.75	MP30216-20	2.77	3.43	1.25
MP30214	3.46	4.00				
MP30216	3.71	4.25				
MP30218	3.96	4.50				
MP30220	4.21	4.75				
MP30222	4.46	5.00				

Shanks for female caps with #6 RWMA tapers			Bent offset shanks for female caps with #6 RWMA tapers			
PART NO.*	A DIM.	B DIM.	PART NO.*	A DIM.	B DIM.	C DIM.
MP3044	1.64	2.25	MP3049-08	2.69	3.30	.50
MP3045	1.89	2.50	MP30412-12	2.81	3.42	.75
MP3046	2.14	2.75	MP30414-12	2.94	3.55	.75
MP3047	2.39	3.00	MP30416-16	3.06	3.67	1.00
MP3048	2.64	3.25	MP30420-20	3.25	3.86	1.25
MP3049	2.89	3.50				
MP30412	3.14	3.75				
MP30414	3.39	4.00				
MP30416	3.64	4.25				
MP30418	3.89	4.50				
MP30420	4.14	4.75				
MP30422	4.39	5.00				

# SHANKS FOR FEMALE CAPS

T.J. Snow Co. (423) 894-6234; FAX: (423) 490-2417 (authorized distributor CMW Inc.)

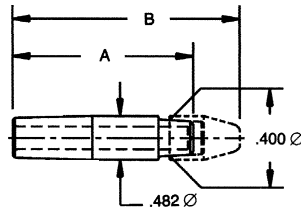


CMW shanks are precision manufactured from CMW®3 class 2 material to provide a high quality mount for cap type electrodes. They are designed for high strength and electrical conductivity.

These shanks are shown with a blind water hole for cap replacement without shutting off water. Shanks with through water holes are available, by adding "TH" to the basic part number. Example; MP30212TH.

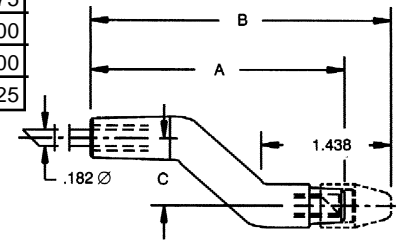
## Shanks for female caps with #4 RWMA tapers

PART NO. *	A DIM.	B DIM.
MP3012	1.25	1.75
MP3013	1.50	2.00
MP3014	1.75	2.25
MP3015	2.00	2.50
MP3016	2.25	2.75
MP3017	2.50	3.00
MP3018	2.75	3.25
MP3019	3.00	3.50
MP30112	3.25	3.75
MP30114	3.50	4.00
MP30116	3.75	4.25
MP30118	4.00	4.50



## Bent offset shanks for female caps with #4 RWMA tapers

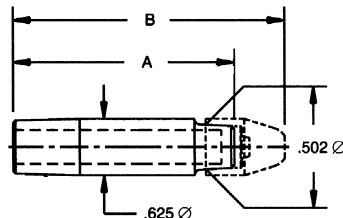
PART NO. *	A DIM.	B DIM.	C DIM.
MP3019-08	2.62	3.28	.50
MP3019-12	2.56	3.22	.75
MP30112-12	2.81	3.47	.75
MP30112-16	2.37	3.03	1.00
MP30116-16	2.87	3.53	1.00
MP30116-20	2.60	3.28	1.25



Bent Dimensions for Reference Only

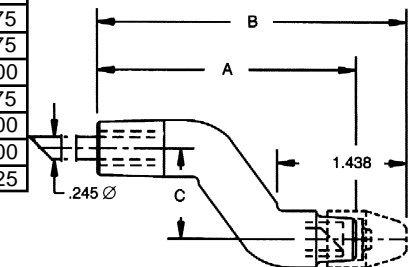
## Shanks for female caps with #5 RWMA tapers

PART NO. *	A DIM.	B DIM.
MP3023	1.46	2.00
MP3024	1.71	2.25
MP3025	1.96	2.50
MP3026	2.21	2.75
MP3027	2.46	3.00
MP3028	2.71	3.25
MP3029	2.96	3.50
MP30212	3.21	3.75
MP30214	3.46	4.00
MP30216	3.71	4.25
MP30218	3.96	4.50
MP30220	4.21	4.75
MP30222	4.46	5.00



## Bent offset shanks for female caps with #5 RWMA tapers

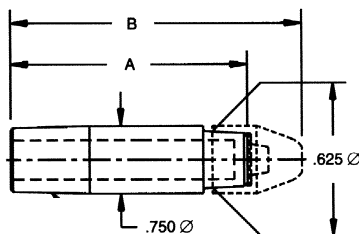
PART NO. *	A DIM.	B DIM.	C DIM.
MP3029-08	2.58	3.20	.50
MP3029-12	2.60	3.12	.75
MP30212-12	2.77	3.44	.75
MP30212-16	2.33	3.00	1.00
MP30214-12	3.00	3.66	.75
MP30214-16	2.81	3.48	1.00
MP30216-16	2.83	3.49	1.00
MP30216-20	2.77	3.43	1.25



Bent Dimensions for Reference Only

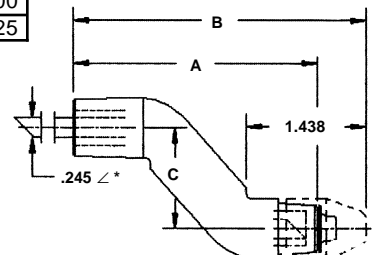
## Shanks for female caps with #6 RWMA tapers

PART NO. *	A DIM.	B DIM.
MP3044	1.64	2.25
MP3045	1.89	2.50
MP3046	2.14	2.75
MP3047	2.39	3.00
MP3048	2.64	3.25
MP3049	2.89	3.50
MP30412	3.14	3.75
MP30414	3.39	4.00
MP30416	3.64	4.25
MP30418	3.89	4.50
MP30420	4.14	4.75
MP30422	4.39	5.00



## Bent offset shanks for female caps with #6 RWMA tapers

PART NO. *	A DIM.	B DIM.	C DIM.
MP3049-08	2.69	3.30	.50
MP30412-12	2.81	3.42	.75
MP30414-12	2.94	3.55	.75
MP30416-16	3.06	3.67	1.00
MP30420-20	3.25	3.86	1.25



Bent Dimensions for Reference Only