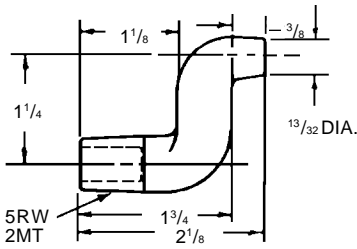
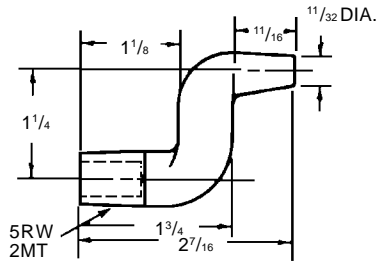


CRANKELECTRODES

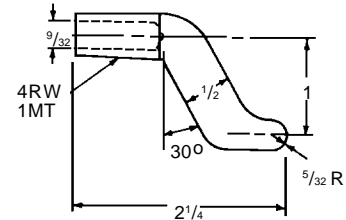
T.J. Snow Co. (423) 894-6234; FAX: (423) 490-2417 (authorized distributor CMW Inc.)



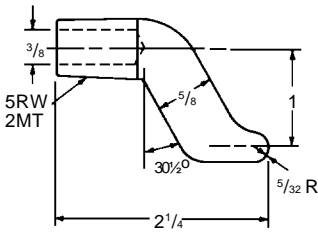
**16-38661 CMW® 3
COLD FORMED***



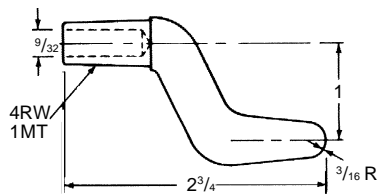
**16-3866 CMW® 3
COLD FORMED***



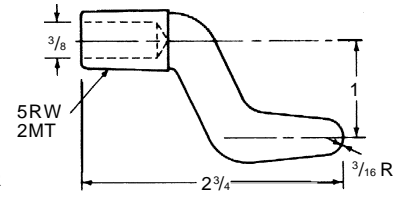
**16-3835 CMW® 3
CASTING**



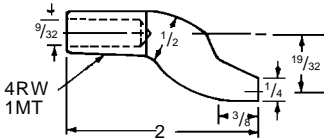
**16-3836 CMW® 3
CASTING**



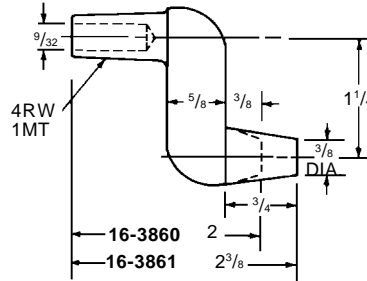
**16-3837 CMW® 3
CASTING**



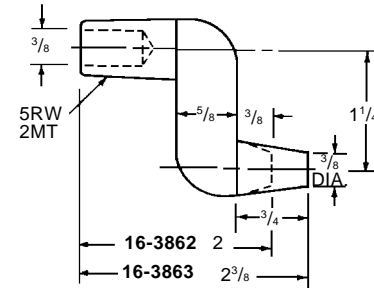
**16-3838 CMW® 3
CASTING**



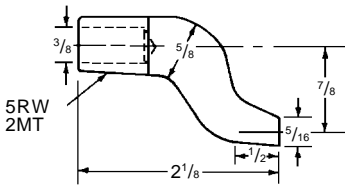
**16-3870 CMW® 3
COLD FORMED***



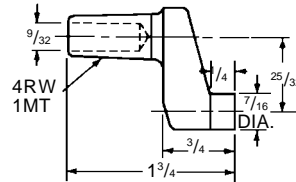
**CMW® 3
FORGED**



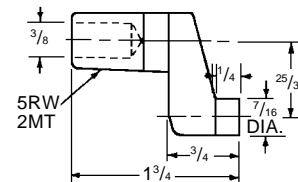
**CMW® 3
FORGED**



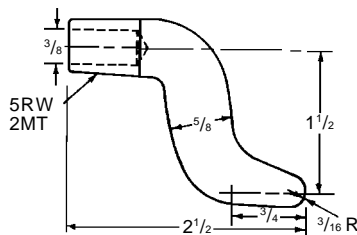
**16-3871 CMW® 3
COLD FORMED***



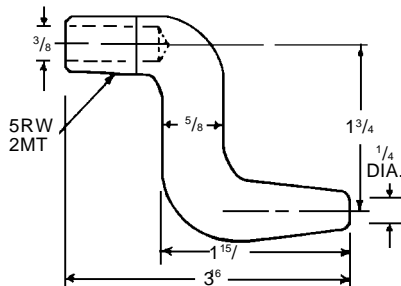
**16-3873 CMW® 3
CASTING**



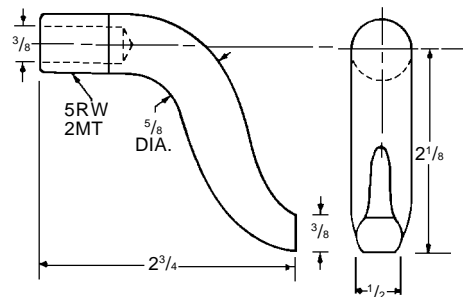
**16-3874 CMW® 3
CASTING**



**16-38351 CMW® 3
COLD FORMED***



**16-38352 CMW® 3
COLD FORMED***



**16-38353 CMW® 3
COLD FORMED***

* Optional material available on special order:
CMW® 28, CMW® 100

See Page 6 for Metric conversions See page 7 for Taper dimensions