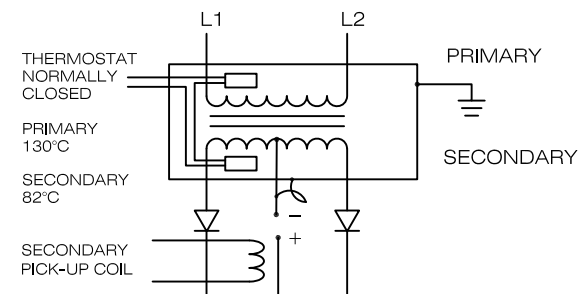


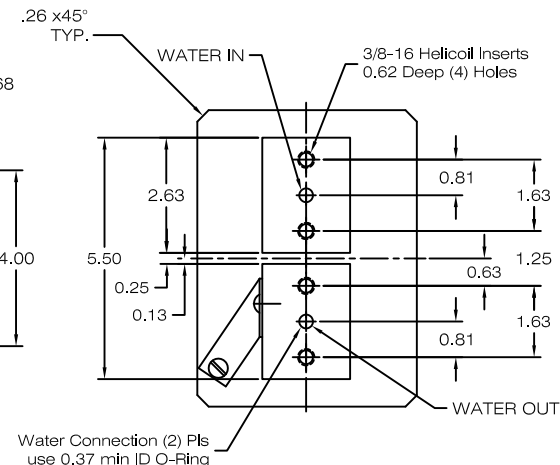
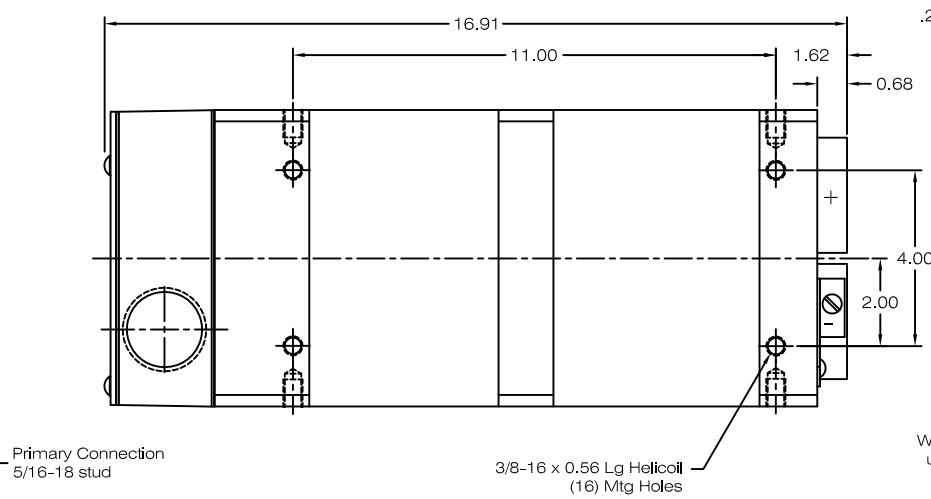
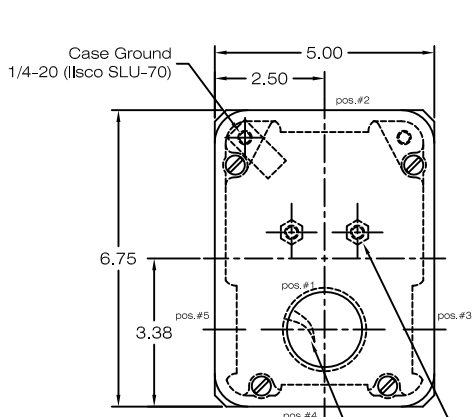
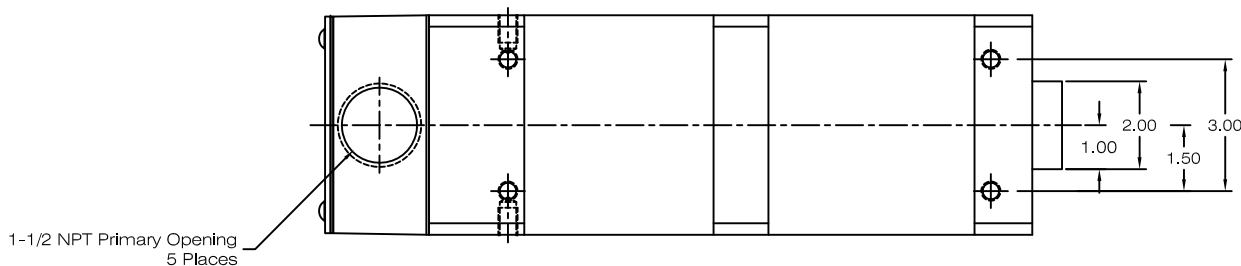
MODEL	CHRYSLER MODEL NO.	KVA @ 50% DC	PRIMARY VOLT/FREQ	SECONDARY VOLTAGE (DC)		TURNS RATIO		WEIGHT LBS
				LO-TAP	HI-TAP	LO-TAP	HI-TAP	
TDC-1042	91-901-1200	100	650/1000Hz	9.0	- -	72:1	-	70
TDC-5515	-----	100	800/1000Hz	9.1	- -	88:1	-	70
TDC-7073	-----	100	325/1000Hz	9.0	- -	36:1	-	70

COOLING REQUIREMENTS: 2.0 GPM @ 30°C



TRANSFORMER CASE MUST BE GROUNDED. TRANSFORMER WILL BE SHIPPED WITH A JUMPER CONNECTING SECONDARY CENTER TAP TO CASE. USER MUST PROVIDE APPROPRIATE GROUNDING OF SECONDARY CIRCUIT. FOR APPLICATIONS ABOVE A 20% DUTY CYCLE, CONTACT ROMAN MANUFACTURING FOR ASSISTANCE.

**NOTE\***  
The secondary terminals of this device are intended as an electrical connection only. Applications must be designed to minimize any forces applied to the secondary terminals, this can be accomplished by transferring forces to a structural member.

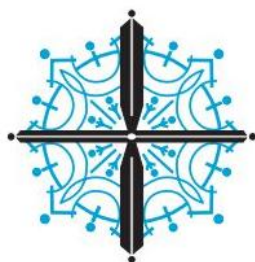


1-1/2 NPT Primary Opening  
5 Places

Case Ground  
1/4-20 (Ilco SLU-70)

Primary Connection  
5/16-18 stud

Thermostat connection &  
Secondary Pick-up Coil connection



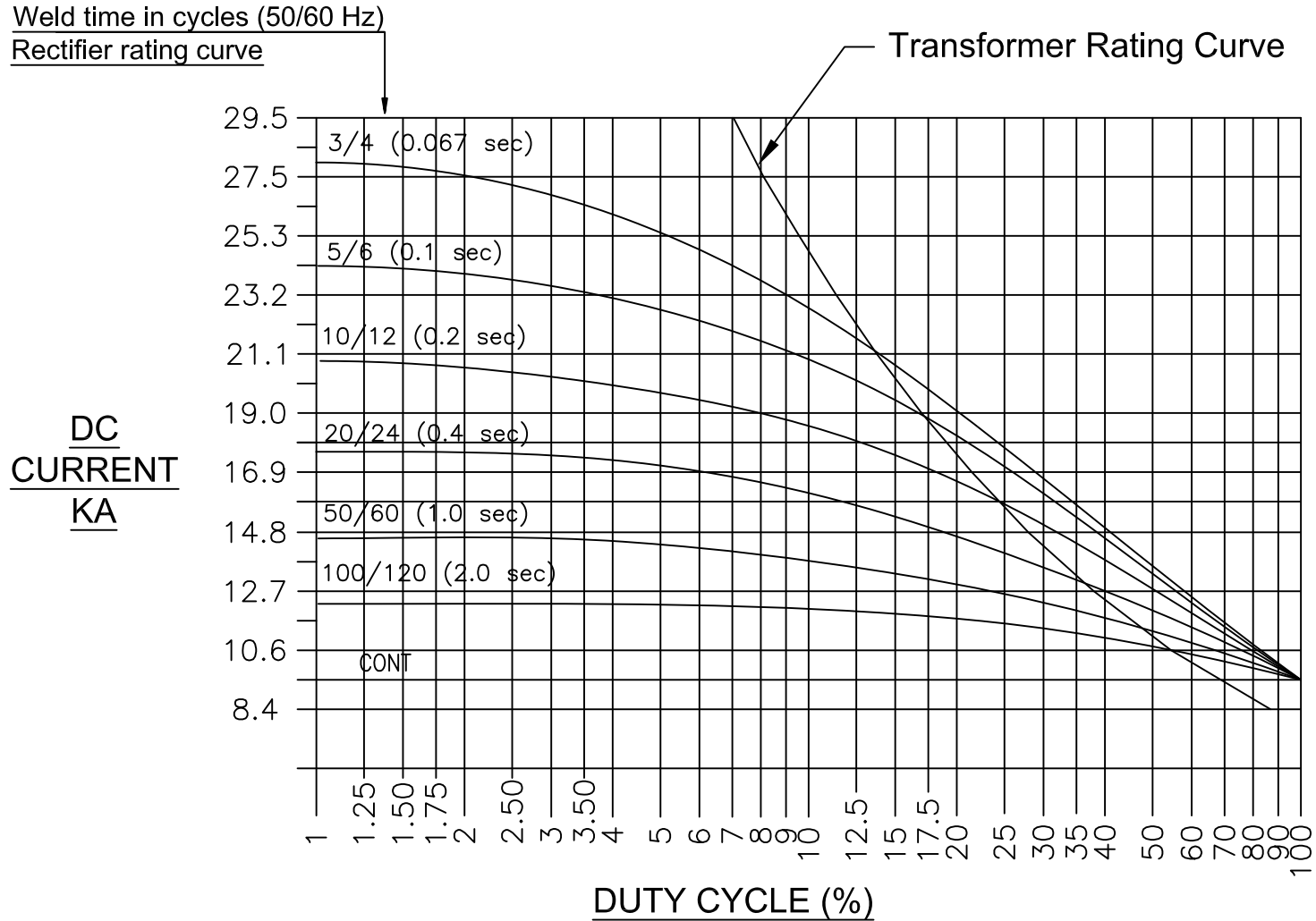
**T. J. SNOW CO.**  
120 Nowlin Lane • P.O. Box 22847  
Chattanooga, Tennessee 37421  
Phone: (423) 894-6234 • Fax: (423) 892-3889  
welders@tjsnow.com or www.tjsnow.com

ALL DIMEN

AD	ADDED PICK-UP COIL TO MODEL	BCC KLY	08JAN13
AC	ADDED TDC-7073	BCC KLY	28FEB12
AB	.26 x 45° CHAMFER WAS 7/16 RADII	BCC KLY	14AUG06
REV	DESCRIPTION	DATE	
<small>THIS DRAWING AND ALL THE INFORMATION AND TECHNOLOGY IN IT ARE EXCLUSIVE, CONFIDENTIAL AND PROPRIETARY TO ROMAN MFG., INC. THIS DRAWING IS OWNED BY ROMAN MFG., INC. AND UNLESS SPECIFICALLY AUTHORIZED BY WRITING, NO COPIES SHALL BE MADE OF THIS DRAWING, AND SHALL BE USED ONLY FOR THE LIMITED PURPOSE FOR WHICH IT IS DISCLOSED AND ONLY TO THE BENEFIT OF ROMAN MFG., INC., AND IT AND ANY COPIES, AUTHORIZED OR NOT, SHALL BE IMMEDIATELY RETURNED UPON ANY REQUEST THEREFOR.</small>			
SCALE:	None	DRAWN BY:	ACG
DATE:	14Jan1997	APPROX WEIGHT:	
DC Power Supply			DRAWING NUMBER:
TDC-1042, TDC-5515			1010302

1010302

# Power Supply Rating Diagram, Single Phase, Center Tap Rectifier. Size "2" Rectifier



Where used  
TDC-1042  
TDC-1060  
TDC-1061  
TDC-1064  
TDC-1102  
TDC-5007  
TDC-5181  
TDC-5182  
TDC-5277  
TDC-5345  
TDC-5515  
TDC-5602  
TDC-5731  
TDC-6095  
TDC-6232  
TDC-6810

Notes:

These curves are based on rated water flow of 2 G.P.M (7.5 L.P.M.).  
Maximum water in temperature of 30°C.  
For applications above a 20% duty cycle, contact Roman Manufacturing for assistance.

Rectifier Rating:

% Duty Cycle is based on shortest time from beginning of one weld to the beginning of next weld. On time/(On + Off time).

Transformer Rating:

% Duty Cycle is total "On" time in one minute.

L	Added TDC-6810 to Where Used List	KLY KLY	24May11
REV	DESCRIPTION	DATE	
<small>THIS DRAWING AND ALL THE INFORMATION AND TECHNOLOGY IN IT ARE EXCLUSIVE, CONFIDENTIAL AND PROPRIETARY TO RoMan MFG. INC. THIS DRAWING IS OWNED BY RoMan MFG. INC. AND UNLESS SPECIFICALLY AUTHORIZED IN WRITING, NO COPIES SHALL BE MADE OF THIS DRAWING, AND SHALL BE USED ONLY FOR THE LIMITED PURPOSE FOR WHICH IT IS DISCLOSED AND ONLY TO THE BENEFIT OF RoMan MFG. INC., AND IT AND ANY COPIES, AUTHORIZED OR NOT, SHALL BE IMMEDIATELY RETURNED UPON ANY REQUEST THEREOF.</small>			
SCALE:	None		DRAWN BY: ACG
DATE:	16Jun98		REVISED:
Rating Curve			DRAWING NUMBER: 1110078

1110078