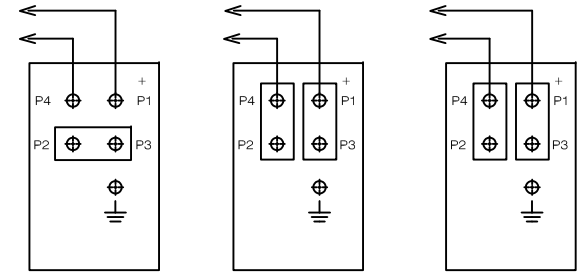


MODEL	KVA @ 50% DC	PRIMARY VOLT/FREQ	SECONDARY VOLTAGE (DC)		TURNS RATIO		WEIGHT LBS
			LO-TAP	HI-TAP	LO-TAP	HI-TAP	
TDC-1057	40	340/1200	n/a	- 4.47	n/a	76:1	50
		680/1200	4.47	- 8.95	152:1	76:1	
TDC-6664	40	800/1000	4.25	- 8.51	188:1	94:1	50

COOLING REQUIREMENTS: 1 GPM @ 30°C



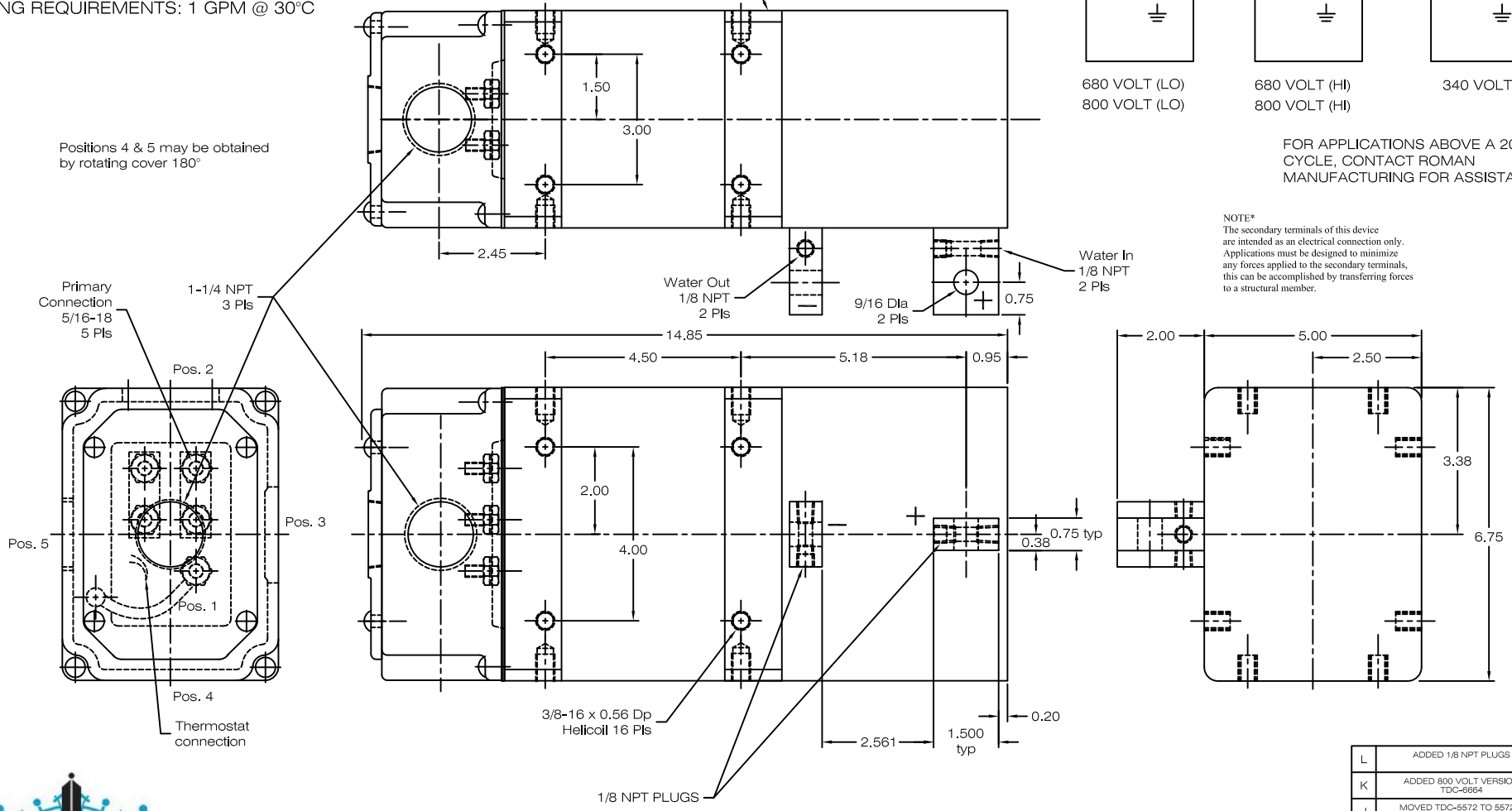
680 VOLT (LO)
800 VOLT (LO)

680 VOLT (HI)
800 VOLT (HI)

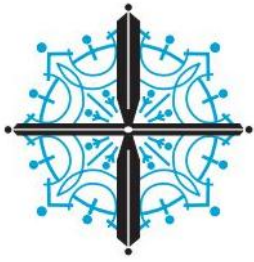
340 VOLT

FOR APPLICATIONS ABOVE A 20% DUTY CYCLE, CONTACT ROMAN MANUFACTURING FOR ASSISTANCE.

NOTE*
The secondary terminals of this device are intended as an electrical connection only. Applications must be designed to minimize any forces applied to the secondary terminals, this can be accomplished by transferring forces to a structural member.



1010312



T. J. SNOW CO.
120 Nowlin Lane • P.O. Box 22847
Chattanooga, Tennessee 37421
Phone: (423) 894-6234 • Fax: (423) 892-3889
welders@tjsnow.com or www.tjsnow.com

DC-3049 = TDC-1057

L	ADDED 1/8 NPT PLUGS	JCB KLY	22JUN12
K	ADDED 800 VOLT VERSION TDC-6664	GMA KLY	08Apr10
J	MOVED TDC-5572 TO 5572-1 UPDATED ELECTRICAL SCHEMATIC	TVD KLY	11DEC07
REV	DESCRIPTION		DATE
DATE:	14AUG97	1010312	WEIGHT: ACG
POWER SUPPLY ASSY TDC-1057			DRAWING NUMBER:
			1010312

Power Supply Rating Diagram, Single Phase, Center Tap Rectifier.

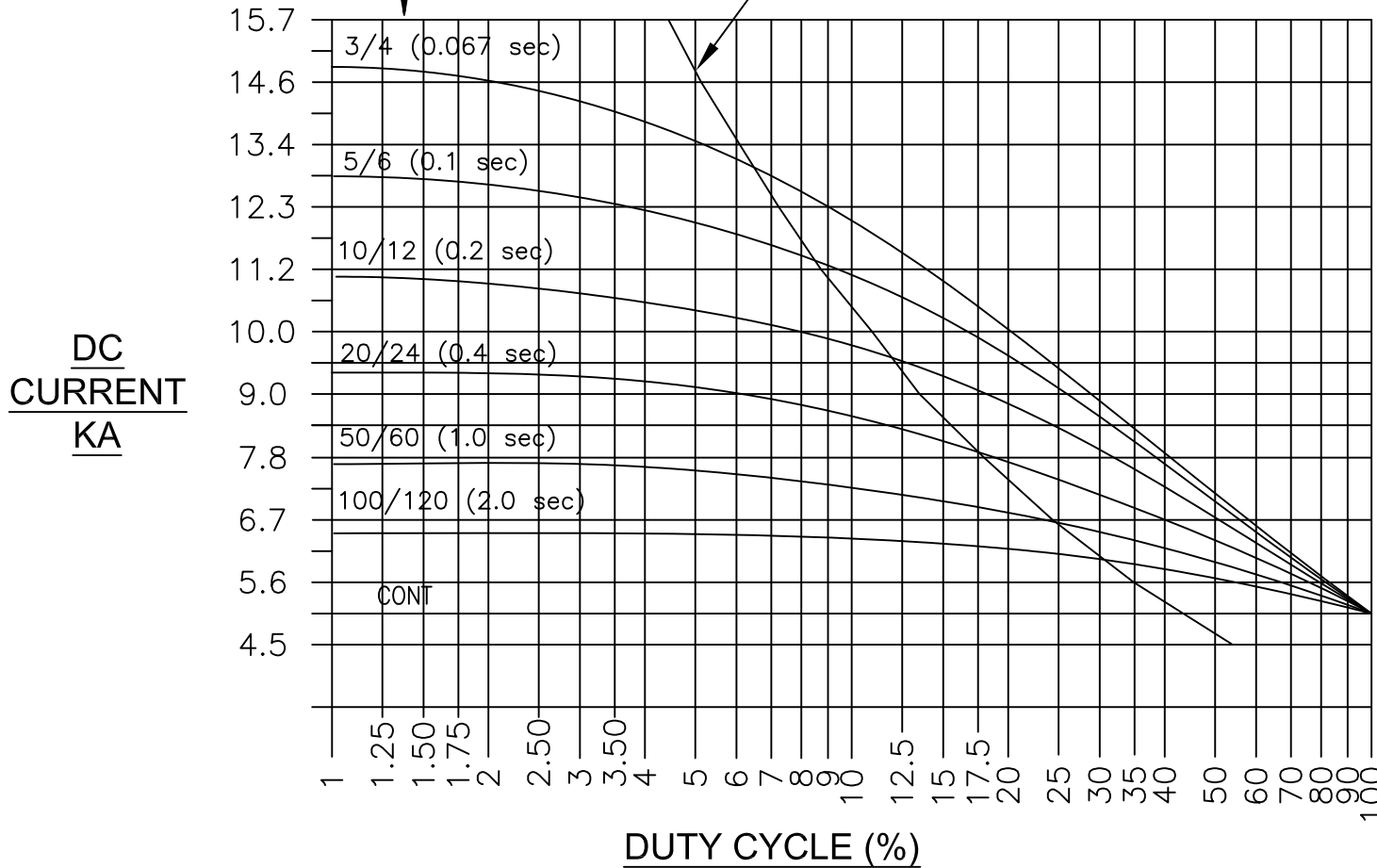
1 Diode(s) per rectifier leg

2 Diodes total

Weld time in cycles (50/60 Hz)

Rectifier rating curve

Transformer Rating Curve



Where used
 TDC-1057
 TDC-1083
 TDC-1095
 TDC-1101
 TDC-5008
 TDC-5572
 TDC-6664

Notes:

These curves are based on rated water flow of 1 G.P.M (3.75 L.P.M.).
 Maximum water in temperature of 30°C.
 For applications above a 20% duty cycle, contact Roman Manufacturing for assistance.

Rectifier Rating:

% Duty Cycle is based on shortest time from beginning of one weld to the beginning of next weld. On time/(On + Off time).

Transformer Rating:

% Duty Cycle is total "On" time in one minute.

I	Added TDC-5543 to Where Used	20 Aug10KLY	B	Title block previously stated for DA162 & DA163	06NOV97 kly
H	Added TDC-5572 to Where Used	28Nov07 KLY	A	Added seconds to curve	22OCT97 acg
G	Added TDC-5008 to Where Used	19Jan06 KLY	REV	DESCRIPTION	DATE
F	Added 'Duty cycle' note	05MAR03 CK	<small>THIS DRAWING AND ALL THE INFORMATION AND TECHNOLOGY IN IT ARE EXCLUSIVE, CONFIDENTIAL AND PROPRIETARY TO ROMAN MFG. INC. THIS DRAWING IS OWNED BY ROMAN MFG. INC. AND UNLESS SPECIFICALLY AUTHORIZED IN WRITING, NO COPIES SHALL BE MADE OF THIS DRAWING, AND SHALL BE USED ONLY FOR THE LIMITED PURPOSE FOR WHICH IT IS DISCLOSED AND ONLY TO THE BENEFIT OF ROMAN MFG. INC. AND IT AND ANY COPIES, AUTHORIZED OR NOT, SHALL BE IMMEDIATELY RETURNED UPON ANY REQUEST THEREFORE.</small>		
E	Updated water flow 3.75 LPM was 4 LPM	25SEP00 acg	SCALE: NONE DATE: 06AUG97		DRAWN BY: KLY REVISED:
D	Added LPM water flow to notes removed Hz rating	07OCT99 acg	RATING CURVE		
C	Revised 1200Hz was 50/60	07APR98 acg	DRAWING NUMBER: 1110067		

1110067