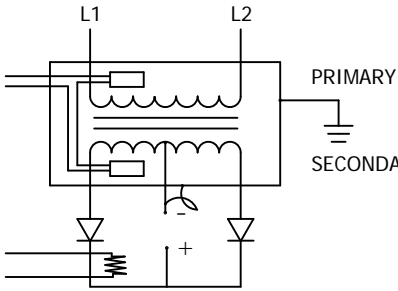


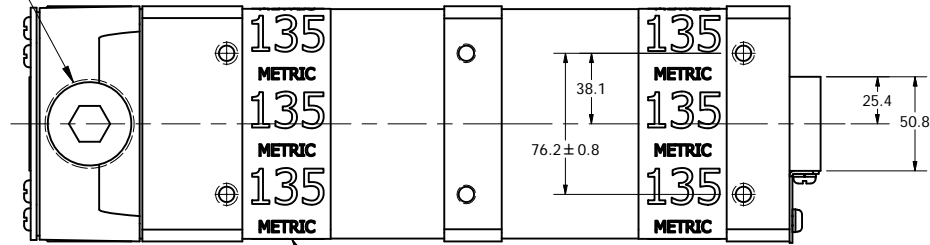
ROMAN MODEL	KVA @ 50% DUTY CYCLE	PRI V/ FREQ	V/SEC	URNS RATIO	DIM "A"	DIM "B"	WEIGHT/ LBS (KG)	MAX. CHANGE IN PRESSURE	FLOW RATE	DCX NUMBER
TDC-5610	135	650/1000	9.0	72:1	463	279	70(32)	14 PSI (.96 BAR)	7.5 LPM	91-680-0516
TDC-5704	185	650/1000	13.0	50:1	463	279	70(32)	14 PSI (.96 BAR)	7.5 LPM	-
TDC-5681	135	800/1000	9.1	88:1	463	279	70(32)	14 PSI (.96 BAR)	7.5 LPM	-
TDC-5705	185	800/1000	13.0	61:1	463	279	70(32)	14 PSI (.96 BAR)	7.5 LPM	-

THERMOSTAT NORMALLY CLOSED
 PRIMARY 130°C
 SECONDARY 80°C
 SECONDARY PICKUP COIL



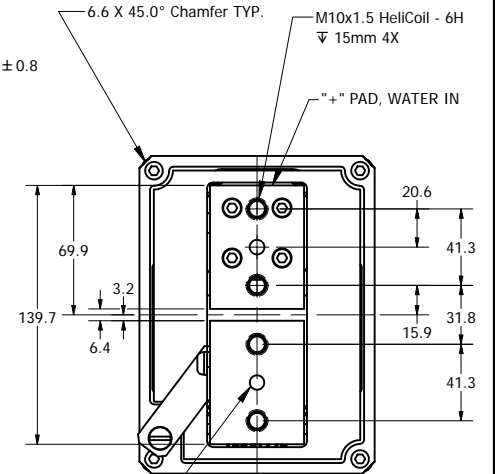
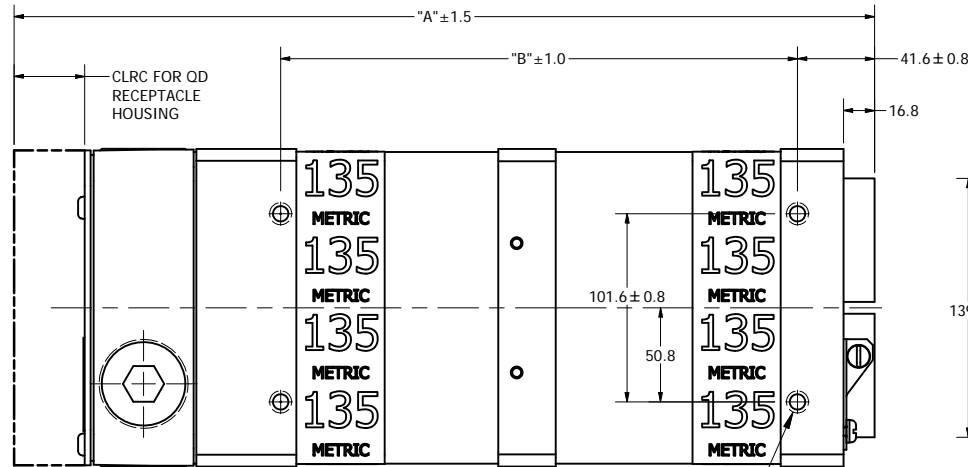
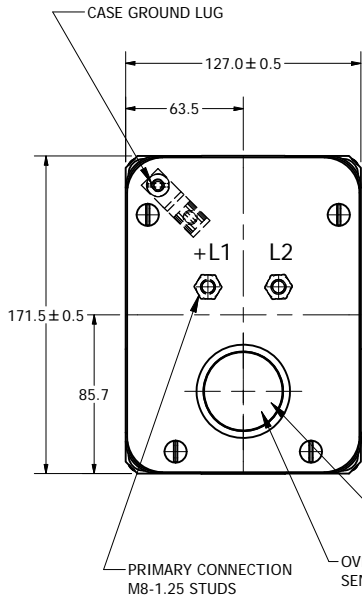
TRANSFORMER CASE MUST BE GROUNDED. TRANSFORMER WILL BE SHIPPED WITH A JUMPER CONNECTING SECONDARY CENTER TAP TO CASE. USER MUST PROVIDE APPROPRIATE GROUNDING OF SECONDARY CIRCUIT. FOR APPLICATIONS ABOVE A 20% DUTY CYCLE, CONTACT ROMAN MANUFACTURING FOR ASSISTANCE.

1 1/2 NPT PRI. OPENING 5X

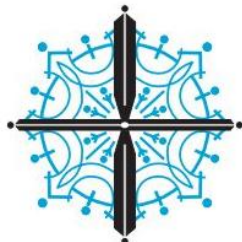


KVA STICKER WILL REFLECT CORRECT RATING PER SPECIFIED POWER SUPPLY

NOTE*
 The secondary terminals of this device are intended as an electrical connection only. Applications must be designed to minimize any forces applied to the secondary terminals, this can be accomplished by transferring forces to a structural member.



WATER CONNECTION (2X) USE 10mm I.D. O-RING 30°C MAX. INLET TEMP.
 CONTACT THE MANUFACTURER FOR PERFORMANCE SPECIFICATIONS



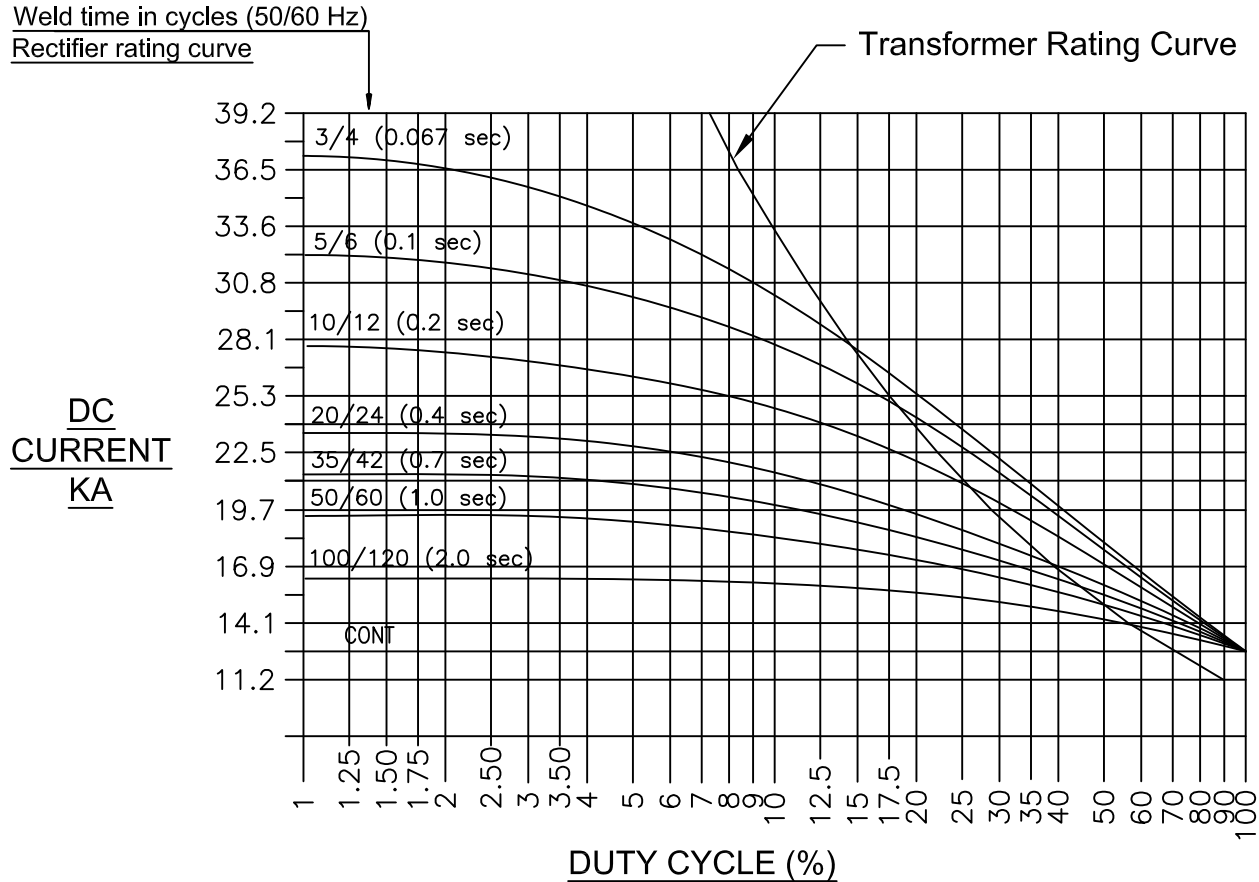
T. J. SNOW CO.

120 Nowlin Lane • P.O. Box 22847
 Chattanooga, Tennessee 37421
 Phone: (423) 894-6234 • Fax: (423) 892-3889
 welders@tjsnow.com or www.tjsnow.com

G	ADDED 6.6 x 45 DEG CHAMFER WAS 7/16 RADII	BCC	KLY	8/04/2006
F	ADDED KVA IDENTIFICATION LABELS	TV	KLY	12/18/2005
E	ADDED 'TDC-5704' & 'TDC-5705' TO TABLE	RB	KLY	10/10/2005

REV	DESCRIPTION	DATE
THIS DRAWING AND ALL THE INFORMATION AND TECHNOLOGY IN IT ARE EXCLUSIVE, CONFIDENTIAL AND PROPRIETARY TO Roman MFG. INC. THIS DRAWING IS OWNED BY Roman MFG. INC. AND UNLESS SPECIFICALLY AUTHORIZED IN WRITING, NO COPIES SHALL BE MADE OF THIS DRAWING, AND SHALL BE USED ONLY FOR THE LIMITED PURPOSE FOR WHICH IT IS DISCLOSED AND ONLY TO THE BENEFIT OF Roman MFG. INC., AND IT AND ANY COPIES, AUTHORIZED OR NOT, SHALL BE IMMEDIATELY RETURNED UPON ANY REQUEST THEREFORE.		
SCALE:	HALF	DRAWN BY: bconner
DATE:	5/3/2010	WEIGHT: N/A
POWER SUPPLY		
		DRAWING NUMBER: 5610-1

**Power Supply Rating Diagram, Single Phase, Center Tap Rectifier.
2 Diode(s) per rectifier leg
4 Diodes total**



Where used
 TDC-5610
 TDC-5667
 TDC-5710
 TDC-6063
 TDC-6101
 TDC-6409
 TDC-6410

Notes:

These curves are based on rated water flow of 2 G.P.M (7.5 L.P.M.),
 Maximum water in temperature of 30°C.


For applications above a 20% duty cycle, contact
 Roman Manufacturing for assistance.

Rectifier Rating:

% Duty Cycle is based on shortest time from beginning of one
 weld to the beginning of next weld. On time/(On + Off time).

Transformer Rating:

% Duty Cycle is total "On" time in one minute.

F	Added TDC-6409 and TDC-6410 to Where Used List	KLY KLY	7Feb09
E	Added TDC-6101 to Where Used List	KLY KLY	11Oct07
REV	DESCRIPTION	DATE	
<small>THIS DRAWING AND ALL THE INFORMATION AND TECHNOLOGY IN IT ARE EXCLUSIVE, CONFIDENTIAL AND PROPRIETARY TO RoMan MFG, INC. THIS DRAWING IS OWNED BY RoMan MFG, INC. AND UNLESS SPECIFICALLY AUTHORIZED IN WRITING, NO COPIES SHALL BE MADE OF THIS DRAWING, AND SHALL BE USED ONLY FOR THE LIMITED PURPOSE FOR WHICH IT IS DISCLOSED AND ONLY TO THE BENEFIT OF RoMan MFG, INC., AND IT AND ANY COPIES, AUTHORIZED OR NOT, SHALL BE IMMEDIATELY RETURNED UPON ANY REQUEST THEREFORE.</small>			
SCALE:	NONE		DRAWN BY: TV
DATE:	04Aug05		REVISED:
RATING CURVE			DRAWING NUMBER:
			RC-5610

RC-5610