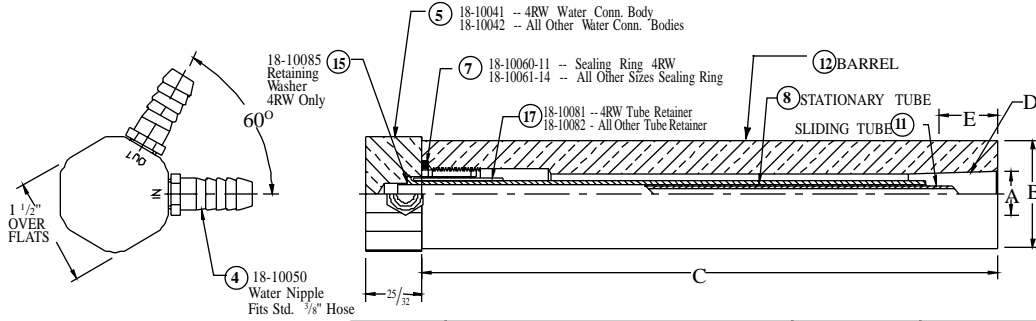
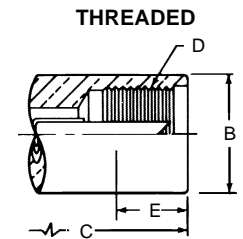
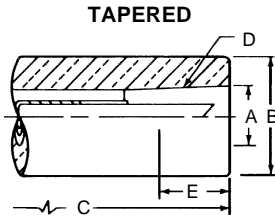


100 SERIES (NON-EJECTOR) WATER COOLED ELECTRODE HOLDERS

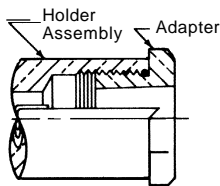
T.J. Snow Co. (423) 894-6234; FAX: (423) 490-2417 (authorized distributor CMW Inc.)



HOLDER ASSEMBLY PART NUMBER	HOLDER SIZE					Water Connection Head Sub-Assembly Include Parts: 4 5 7 8 15 17	⑧ Stationary Tube	⑪ Sliding Tube	⑫ Barrel
	A Major Taper Dia.	B Barrel Dia.	C Barrel Length	D Taper Or Thread	E Engagement with Std. Electrode				
18-101 18-102 18-103 18-104	.463	3/4 7/8 1 1 1/4	3	4RW 1MT	1/2	18-10091-3	18-10044-3	18-10046-3	18-11110-3 18-11210-3 18-11310-3 18-11410-3
18-106 18-107 18-108	.613	1 1 1/4 1 1/2	3	5RW 2MT	3/4	18-10092-3	18-10045-3	18-10047-3	18-11610-3 18-11710-3 18-11810-3
18-111 18-112 18-113 18-114	.463	3/4 7/8 1 1 1/4	8	4RW 1MT	1/2	18-10091-8	18-10044-8	18-10046-8	18-11110-8 18-11210-8 18-11310-8 18-11410-8
18-116 18-117 18-118	.613	1 1 1/4 1 1/2	8	5RW 2MT	3/4	18-10092-8	18-10045-8	18-10047-8	18-11610-8 18-11710-8 18-11810-8
18-119 18-120	.844	1 1/4 1 1/2	8	7RW 3MT	1 1/8	18-10092-8	18-10045-8	18-10047-8	18-11910-8 18-12010-8
18-131 18-132 18-133 18-134	.463	3/4 7/8 1 1 1/4	12	4RW 1MT	1/2	18-10091-12	18-10044-12	18-10046-8	18-11110-12 18-11210-12 18-11310-12 18-11410-12
18-136 18-137 18-138	.613	1 1 1/4 1 1/2	12	5RW 2MT	3/4	18-10092-12	18-10045-12	18-10047-8	18-11610-12 18-11710-12 18-11810-12
18-169 18-170 18-171	—	1 1 1/4 1 1/2	8	5/8-18	9/16	18-10092-8	18-10045-8	18-10047-8	18-16910-8 18-17010-8 18-17110-8
18-172 18-173 18-174	—	1 1 1/4 1 1/2	8	7/8-14	9/16	18-10092-8	18-10045-8	18-10047-8	18-17210-8 18-17310-8 18-17410-8
18-175 18-176	—	1 1/4 1 1/2	8	1-14	3/4	18-10092-8	18-10045-8	18-10047-8	18-17510-8 18-17610-8



ADAPTERS FOR USE WITH THREADED



Holder Assembly No.	Adapter Part No.	Page	Attachment Description	Adapter Part No.	Page	Attachment Description
18-169 18-170 18-171	18-750	29	4RW 1MT Female	18-753 18-754	27	4RW 1MT Female 5RW 2MT Female
	18-751	27	5RW 2MT Female			
	18-752	27	5/8-18 M. Thd.			
18-172 18-173 18-174	18-811	36	#1 Size "Nu-Twist" [®]	May also be used with universal Adapters having 7/8-14 Male thread SEE PAGE 35		
	18-770	27	4RW 1MT Female			
	18-771	27	5RW 2MT Female			
18-175 18-176	18-785	27	4RW 1MT Female	May also be used with universal Adapters having 1-14 Male thread SEE PAGE 35		
	18-786	27	5RW 2MT Female			
	18-783	27	6RW Female			
	18-787	27	7RW 3MT Female			
	18-812	36	#2 Size "Nu-Twist" [®]			

ORDER BY CMW PART NUMBER ONLY