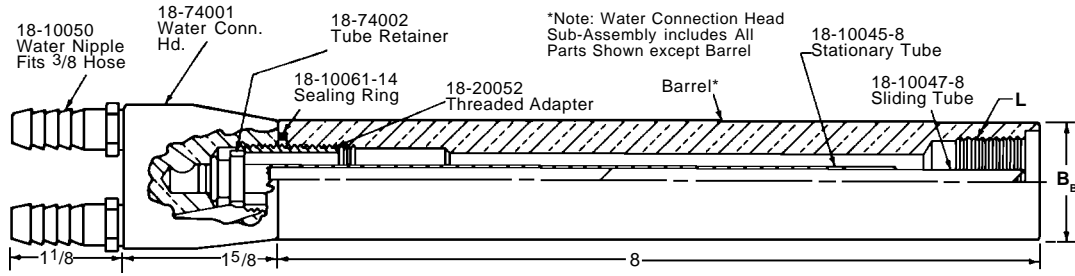


# 600 SERIES UNIVERSAL HOLDER COMPONENTS

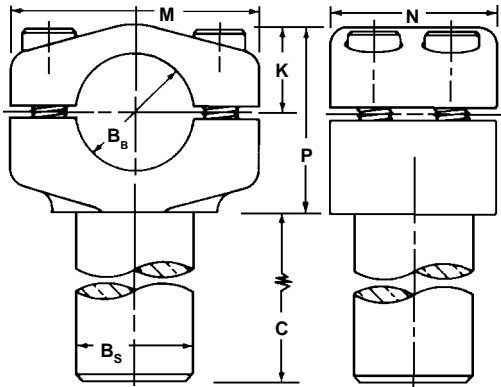
T.J. Snow Co. (423) 894-6234; FAX: (423) 490-2417 (authorized distributor CMW Inc.)



## SUB-ASSEMBLIES AND PARTS



\*Note: Water Connection Head Sub-Assembly includes All Parts Shown except Barrel



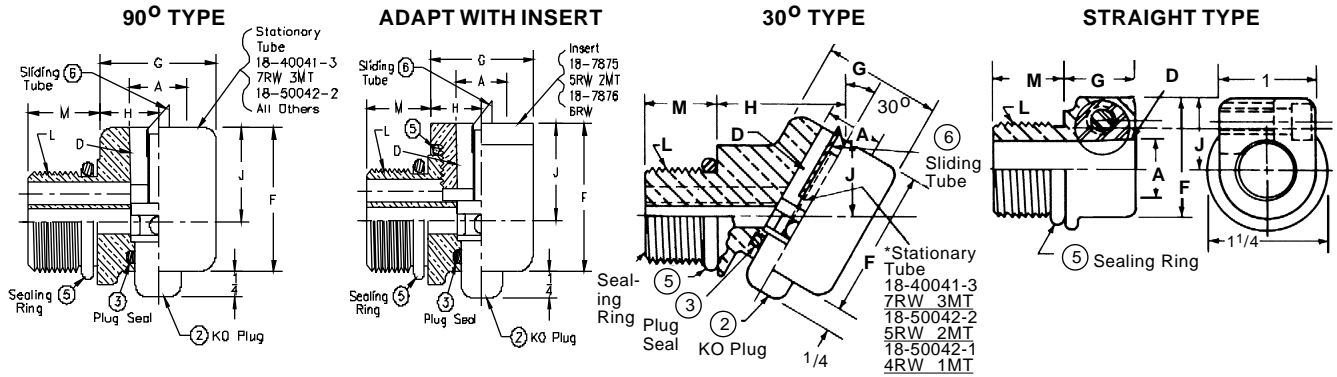
UNIVERSAL BARREL (HOLDER) SUB-ASSEMBLY NO.	L Thread Size	B <sub>b</sub> Barrel Dia.	Barrel Part No.*	Water Conn.* Sub-Assembly Part No.
18-701		1	18-37210-8	
18-702	7/8-14	1 1/4	18-37310-8	18-74000-8
18-704		1 1/4	18-37510-8	
18-705	1-14	1 1/2	18-37610-8	18-74000-8

### "T" CONNECTORS FOR HOLDERS

"T" CONNECTOR ASSEMBLY NO.	B <sub>b</sub> Hole Dia.	B <sub>s</sub> Shank Dia.	C Shank Length	P Head Height	K ØHole Over Top	M Length	N Width	
18-725	1	7/8	3	1 3/4	3/4	2 5/16	1 1/2	2
18-726	1	1	3	1 3/4	3/4	2 5/16	1 1/2	BOLT
18-727	1 1/4	1 1/4	3 1/2	2	15/16	2 5/8	1 3/4	4 BOLT
18-728	1 1/2	1 1/4	4	2 5/16	1 1/8	2 7/8	2	
18-729	1 1/2	1 1/2	4	2 5/16	1 1/8	2 7/8	2	
18-730	1 1/4	1 1/2	4	2 5/16	1 1/8	2 7/8	2	

Note: See Page 42 for 30° and small 90° "T" connections.

## MALE THREAD TO FEMALE TAPER ADAPTERS



ASSEMBLY PART NO.	Adapter Angle	MALE THREAD		FEMALE TAPER		F Overall Head Height	G Head Length	H End B'bl. to C.L. of Taper	J C.L. Barrel to C.L. of Taper	② K.O. Plug Part No.	③ K.O. Plug Seal Part No.	⑤ Sealing Ring Part No.	⑥ Sliding Tube Part No.
		L Size Thd.	M Length	D Size	A Major Dia.								
18-764	90°			4RW				19/32	13/16				
18-765	30°	7/8-14	9/16	1MT	.463	19/16	1 Dia.	11/16	15/32	18-50021	18-10060-8	18-76460	18-50041-1
18-766	90°			5RW	.613	113/16	1 Dia.	19/32	11/16	18-50022			18-40043-3
18-767	30°	7/8-14	9/16	2MT		113/16	1 1/16 Dia.	11/32	53/64	18-50022	18-10060-10	18-76460	18-40043-3
18-768	Str.			2MT		1 1/4	3/4	—	3/4	—	—	—	—
18-780	90°			5RW	.613	113/16	1 1/4 Dia.	21/32	11/16	18-50022			18-40043-3
18-781	30°	1-14	3/4	2MT		113/16	15/16 Dia.	13/8	13/16	18-50022	18-10060-10	18-10060-17	18-40043-3
18-784	Str.			2MT		1 1/4	3/4	—	3/4	—	—	—	—
18-782	90°			7RW			1 1/2 Dia.	25/32	13/16				18-40043-4
18-783	30°	1-14	3/4	3MT	.844	23/16	19/16 Dia.	13/8	13/16	18-50023	18-10060-12	18-10060-17	18-40043-4
*18-7805	90°			5RW			1 1/4 Dia.	21/32	11/16				18-40043-3
*18-7815	30°	1-14	3/4	2MT	.613	113/16	15/16 Dia.	13/8	13/16	18-50022	18-10060-10	18-10060-17	18-40043-3
*18-7806	90°			6RW	.731	115/16	1 1/4 Dia.	21/32	13/16				18-40043-3
*18-7816	30°	1-14	3/4	6RW	.731	115/16	15/16 Dia.	17/16	59/64	18-50022	18-10060-10	18-10060-17	18-40043-3

\* These adapters have threaded inserts 18-7875—5RW 2MT or 18-7876—#6 RW Taper.

ORDER BY CMW PART NUMBER ONLY