

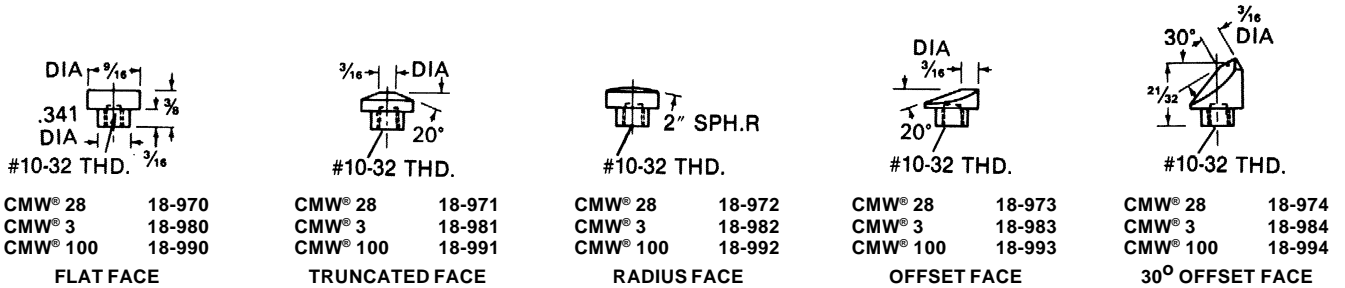
SOCKET (OR BUTTON) AND "Nu-Twist"[®] ELECTRODES

T.J. Snow Co. (423) 894-6234; FAX: (423) 490-2417 (authorized distributor CMW Inc.)



Socket Type CMW[®] 28, CMW[®] 3 and CMW[®] 100 Welding Electrodes

(Use with 900 and 950 Series Holders Page 42)



"Nu-Twist"[®], CMW[®] 3 and CMW[®] 100 Welding Electrodes

(Use with 800 Series Adapters Page 36, 38, 39)

No tapers or threads

Can be extracted with a simple turn of hexagon locking nut

Any contour in electrode face can be located or relocated in a given position

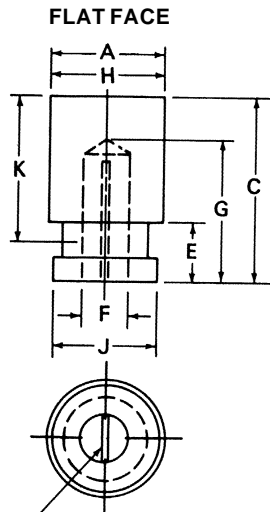
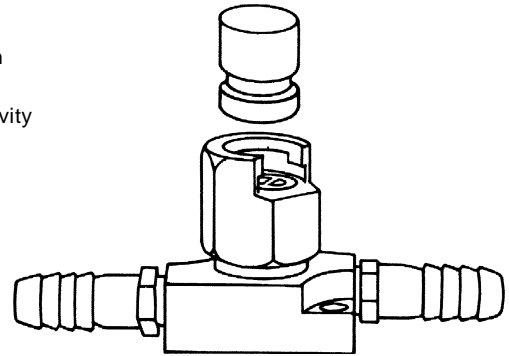
Water circulated to end of electrode for maximum cooling

Silver plated contact surfaces on electrode and base for maximum conductivity

Provides a simple, low-cost electrode for most special applications

Electrodes shown can be modified with contours to provide faces required

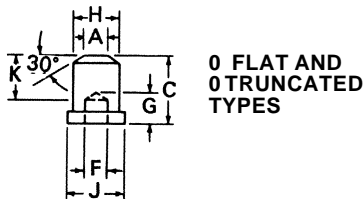
for most resistance welding applications



*This baffle is used in electrodes over 1" long to assure water circulation

"Nu-Twist"[®] ELECTRODES

Size	Type	ELECTRODE PART NO.		H Body Dia.	A Welding Face Dia.	C Overall Length	E Adapter Clearance	F Water Hole Dia.	G Water Hole Depth	J Electrode Seat Dia.	K Electrode Ext. From Adapt.
		CMW [®] 3	CMW [®] 100								
1	0 Flat	338750	538750	1/2	1/2	3/4	—	1/4	3/8	.625	1/2
		338030	538030	1/2	1/2	1 1/2	—	1/4	1 1/8	.625	1 1/4
1	0 Trunc.	378750	578750	1/2	1/4	3/4	—	1/4	3/8	.625	1/2
		378030	578030	1/2	1/4	1 1/2	—	1/4	1 1/8	.625	1 1/4
1	Flat	338751	538751	5/8	5/8	3/4	5/16	1/4	3/8	.625	1/2
		338031	538031	5/8	5/8	1 1/2	5/16	1/4	1 1/8	.625	1 1/4
2	Flat	338012	538012	1 1/4	1 1/4	1	5/8	1/2	1/2	1.125	1/2
		338052	538052	1 1/4	1 1/4	2	5/8	1/2	1 1/2	1.125	1 1/2
4	Flat	338014	538014	1 3/4	1 3/4	1	5/8	3/4	1/2	1.625	1/2
		338054	538054	1 3/4	1 3/4	2	5/8	3/4	1 1/2	1.625	1 1/2



Where the above electrodes will not meet your special welding applications, consult your CMW distributor or factory for the assistance of CMW engineers in designing special electrodes for your application. The design may require special face contours, lengths or insulated locating pins. The specials feature the same advantages offered in all "Nu-Twist"[®] electrodes. To expedite this service where possible, specify electrode size, type, material, "H" diameter, "A" diameter (or face contour), "C" length, and "G" water hole depth. If job is very special, prints or samples of parts to be welded would be desirable.

ORDER BY CMW PART NUMBER ONLY