

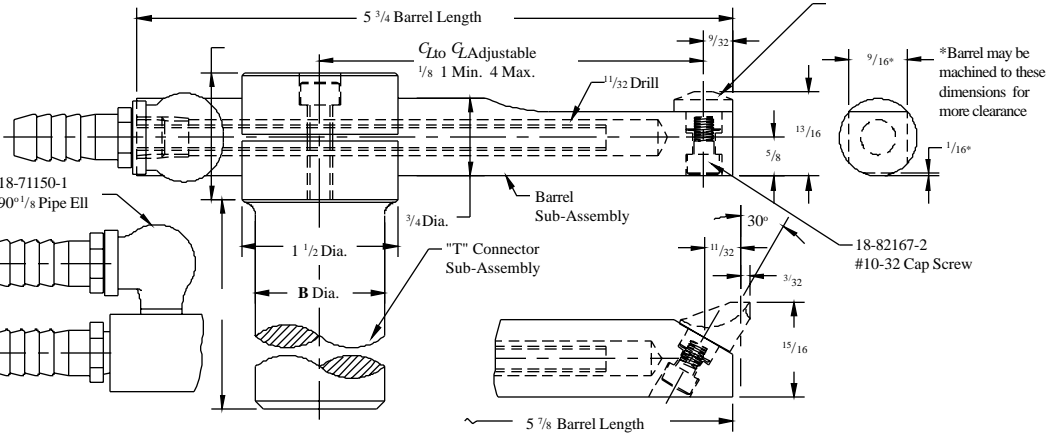
900 SERIES LIGHT DUTY WATER COOLED UNIVERSAL HOLDER



T.J. Snow Co. (423) 894-6234; FAX: (423) 490-2417 (authorized distributor CMW Inc.)

**Note: Sold as a sub-assembly.
Water nipple—tube assembly
18-90041-1
Water nipple 18-10050
#10-32 cap screw 18-82167-2
90° 1/8 pipe ell 18-71150-1

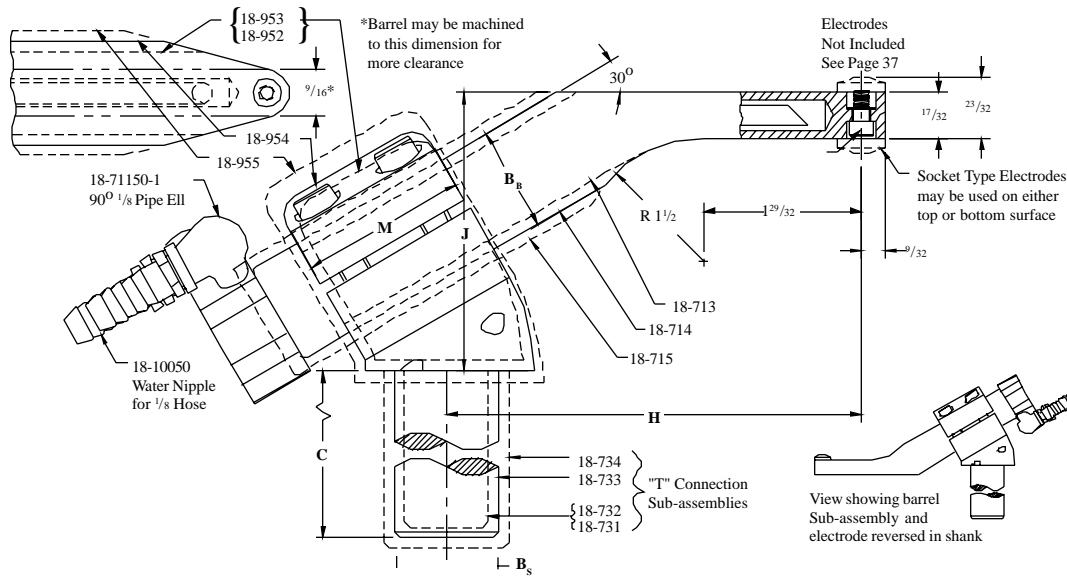
May be purchased separately
18-71150-1
90° 1/8 Pipe Ell
18-10050 Water Nipple for 3/8 Hose
18-90041-1 Water Nipple Tube Assembly for 3/8 Hose



HOLDER ASSEMBLY PART NUMBER	Holder Angle	B Shank Dia.	Barrel Sub-Assembly**	"T" Connection*	Barrel*
18-901	90°		18-709		18-70910-1
18-902	30°	3/4	18-710	18-720	18-71010-1
18-903	90°		18-709		18-70910-1
18-904	30°	7/8	18-710	18-721	18-71010-1
18-905	90°		18-709		18-70910-1
18-906	30°	1	18-710	18-722	18-71010-1
18-907	90°		18-709		18-70910-1
18-908	30°	1 1/4	18-710	18-723	18-71010-1

Holders of Other Shank Diameters and Lengths or Design Modifications Are Available on Request as Specials.

950 SERIES WATER COOLED PADDLE HOLDER



The Paddle Holder's heavy duty construction enables it to be used at high pressures in hard to reach spots. A minimum clearance is required. The barrel is adjustable in the "T" connection by both rotation and amount of offset.

HOLDER ASSEMBLY PART NUMBER	HOLDER SIZE						Barrel Sub-Assembly**	"T" Connector
	B Barrel Dia.	B _s Shank Dia.	C Shank Length	H Offset Range	J Height Range	M "T" Width		
18-952 18-953	1	7/8 1	3	3 ³ / ₈ to 5 ³ / ₃₂	2 ¹ / ₁₆ to 3 ¹ / ₁₆	1 1/2	18-713	18-731 18-732
18-954 18-955	1 1/4 1 1/2	1 1/4 1 1/2	3 1/2 4	4-5 ²³ / ₃₂ 4 ⁷ / ₃₂ -5 ¹⁵ / ₁₆	2 ³ / ₄ -3 ³ / ₄ 2 ⁷ / ₈ -3 ⁷ / ₈	1 3/4 2	18-714 18-715	18-733 18-734

Holders of other Shank Dia. and Lengths or Design Modifications are available on request as Specials.

**Note: Sold as a sub-assembly
Water nipples 18-10050
90° 1/8 pipe ells 18-71150-1
10-32 cap screw 18-82167-2
May be purchased separately.

These 30° "T" connector may be interchanged with the 90° Universal Type "T" Conn. page 35. See page 28 for suggested set ups.