

ELECTRODE DRESSING CUTTERS AND ACCESSORIES

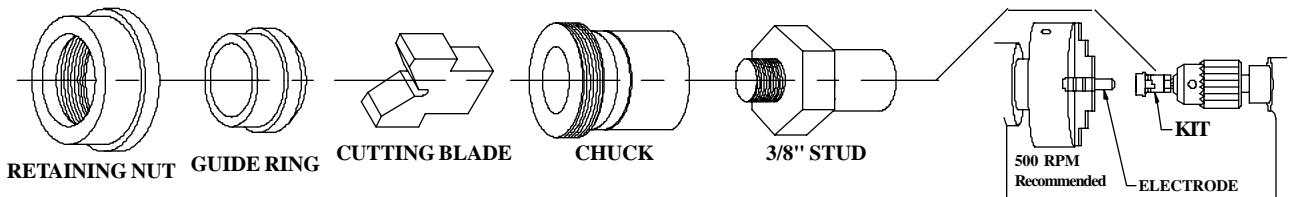


T.J. Snow Co. (423) 894-6234; FAX: (423) 490-2417 (authorized distributor CMW Inc.)

ELECTRODE DRESSING ACCESSORIES

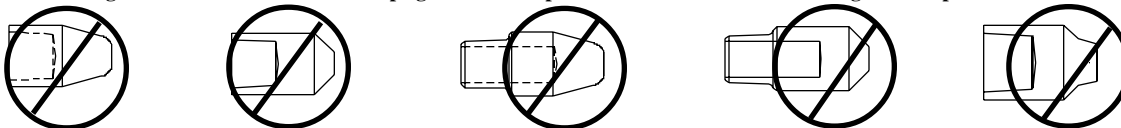
TO DRESS Standard RWMA 4 (#1 MT)								
	NOSE STYLE (CMW ELECTRODE NO.)	DOME n11n...	POINTED n21n...	FLAT n31n...	2" RADIUS	3" RADIUS	4" RADIUS	10" RADIUS
KIT** TO ORDER	18-1390411	18-1390420	18-1390410	18-1390413	18-1390414	18-1390415	18-1390416	18-1390412
Replacement Blade (for above kit)	18-139411	18-139420	18-139410	18-139413	18-139414	18-139415	18-139416	18-139412
Replacement Guide Ring (for above kit)	18-139401	18-139402	18-139401	18-139401	18-139401	18-139401	18-139401	18-139401

****Note:** Each Kit includes Stud (for 3/8" keyed chuck), Chuck, 1 Guide Ring, 1 appropriate Blade, and Retaining Nut.
This kit is appropriate for use with either Pneumatic Power Tool (18-1310) or any rotary device with 3/8" keyed chuck.
The Pneumatic Power Tool is recommended for dressing while installed in the welder.



TO DRESS Standard RWMA 5 (#2 MT)								
	NOSE STYLE (CMW ELECTRODE NO.)	DOME n12n...	POINTED n22n...	FLAT n32n...	2" RADIUS n52n...	3" RADIUS n82n...	4" RADIUS n92n...	10" RADIUS n62n...
KIT** TO ORDER	18-1390511	18-1390520	18-1390510	18-1390513	18-1390514	18-1390515	18-1390516	18-1390512
Replacement Blade (for above kit)	18-139511	18-139520	18-139510	18-139513	18-139514	18-139515	18-139516	18-139512
Replacement Guide Ring (for above kit)	18-139501	18-139502	18-139501	18-139501	18-139501	18-139501	18-139501	18-139501

Note: Cutters are **not** designed to conform to "Electrode Cap" geometries. Caps are intended for metal value salvage when expended.



ELECTRODE DRESSERS



T.J. Snow Co. (423) 894-6234; FAX: (423) 490-2417 (authorized distributor CMW Inc.)

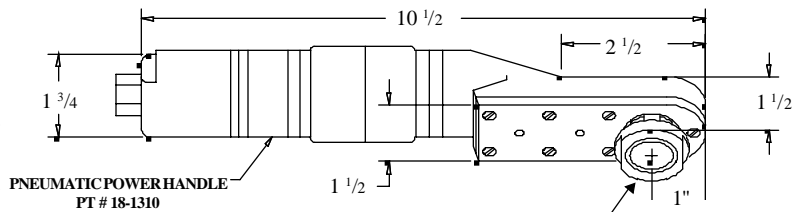
PNEUMATIC POWER HANDLE FOR ELECTRODE DRESSING PART NO. 18-1310

Light weight and rugged construction, this CMW Pneumatic Power Handle requires a clearance of only 1 1/2" with a standard ring and 2" with an extended ring. In most situations this allows dressing of electrodes without removal from the welder. Operating at a cutting speed of 1200 RPM, it enables the operator to dress electrodes quickly and accurately. Cutters and guide rings are easily replaced. These must be matched to the electrode nose and are selected from the chart on page 46.

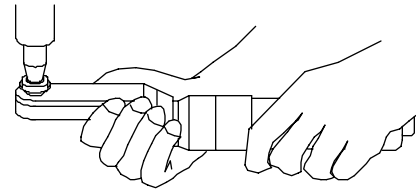
CMW Electrode Dresser 18-1310 is supplied without blade holder, ring and cutter blade. When ordering, specify the "Kit" appropriate for your dressing needs as selected from the table on page 46.

(The "stud" furnished with the "Kit" is not required when using the Pneumatic Power Handle. It may optionally be used, but will increase the clearance required on the welder for dressing).

Additional special cutters can be furnished upon request.



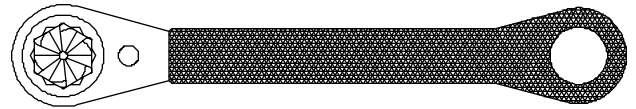
Cutter Kit not included. Order Cutter Kit separately (see page 46)



Electrode Dresser — Part No. 18-1307

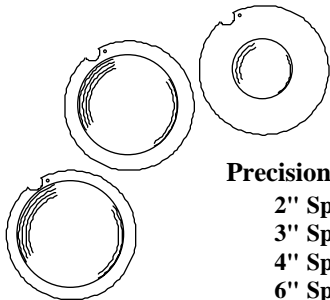
The Electrode Dresser quickly removes the "mushroomed" portions of spot welding electrodes and renews 4RW or 5RW Taper, dome or pointed electrodes with the proper operating contour.

The Electrode Dresser re-machines both upper and lower electrodes to the correct profile "on the job"—provided both electrodes are identical—without removal of the electrodes from their holders. Dresser is 10" long, with a replaceable cutter of hardened tool steel.



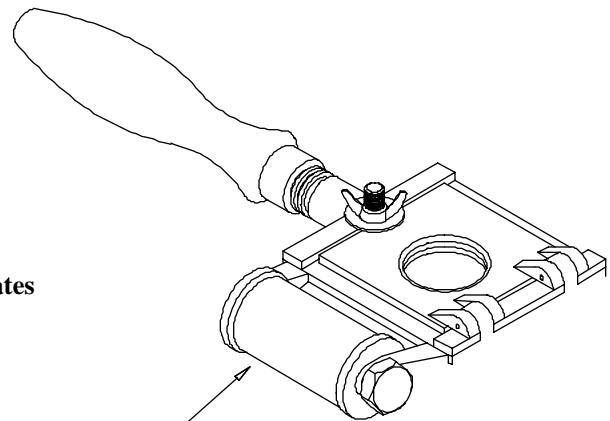
Order replaceable cutters by—18-130701
Order replaceable handle by—18-130702

ELECTRODE DRESSER PART NO. 18-1370



Precision Ground Contour Plates

- 2" Sphr. Rad. - 18-137001
- 3" Sphr. Rad. - 18-137002
- 4" Sphr. Rad. - 18-137003
- 6" Sphr. Rad. - 18-137004
- 8" Sphr. Rad. - 18-137005
- 10" Sphr. Rad. - 18-137006



Replaceable 2" Roll Abrasive Cloth 18-137009

Electrodes Dressed to Any Radius Without Removal from Welder

In certified resistance welding and where clean, strong welds are necessary on a production basis the Maintain-A-Contour Dresser pays big dividends. Its use not only assures consistent quality welds in aircraft metals, but saves valuable production time in all dressing operations.

The Maintain-A-Contour Dresser is supplied with a spool of 240 grit cloth, and one set of (2 per set) precision ground contour plates. Specify the size radius (2"—3"—4"—6"—8"—10") plates required.

Plates with special radii are available on special request. The abrasive cloth is standard 2" width.