

NOTE:

OPTIONAL ADAPTER KIT "R3210" (SUPERTANIUM HARDWARE)

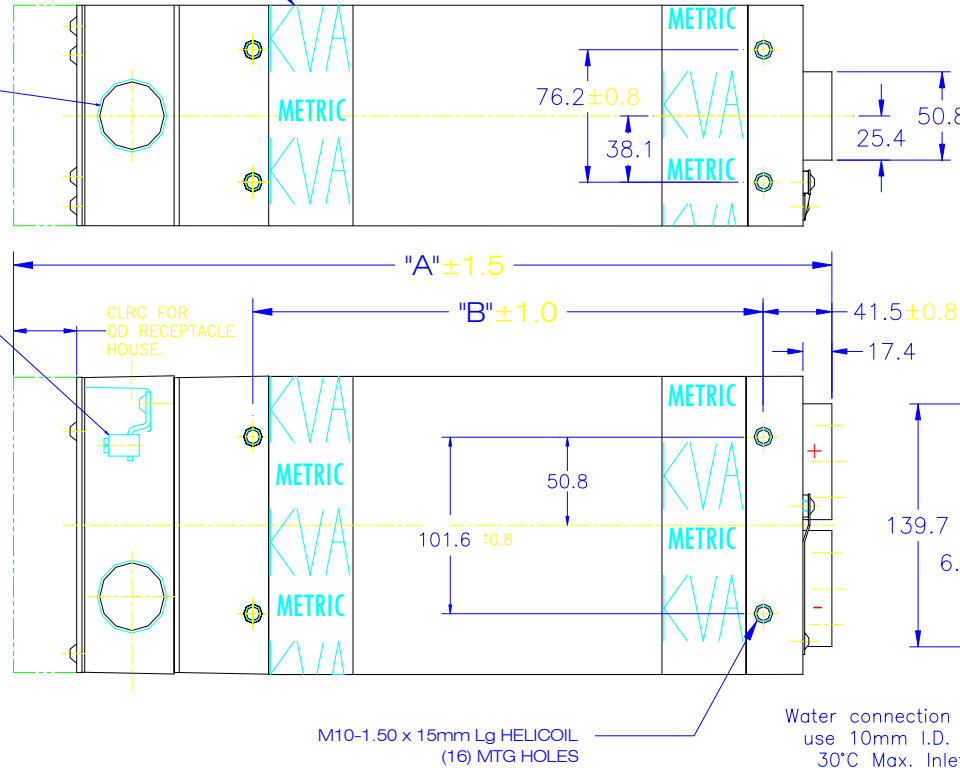
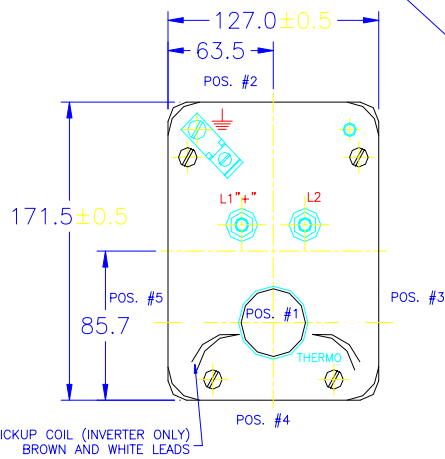
RoMan Model	DCX / NPM code	KVA	PRI V / FREQ	V/Sec	WEIGHT/LBS (KG)	Dim "A"	Dim "B"	Turns Ratio	MAX. Δ P	Flow Rate
T48665SC5196WX	91-901-1213	65	480/60	6.3	85(38.8)	463	279	76:1	4 PSI (.27 BAR)	4 LPM
T48693X5197WX	91-901-1214	93	480/60	10.9	89(40.6)	463	279	88:2	8 PSI (.55 BAR)	4 LPM
T486136X5198WX	91-901-1215	136	480/60	16.0	119(54.3)	565	381	60:2	8 PSI (.55 BAR)	4 LPM
TDC-1064	91-901-1216	100	650/1000	9.0	70(32)	463	279	72:1	14 PSI (.96 BAR)	7.5 LPM
TDC-1129	91-901-1217	150	650/1000	13.0	70(32)	463	279	50:1	14 PSI (.96 BAR)	7.5 LPM

KVA IDENTIFICATION REFER TO "KVA" COLUMN IN TABLE
WHITE TEXT BLUE BACKGROUND

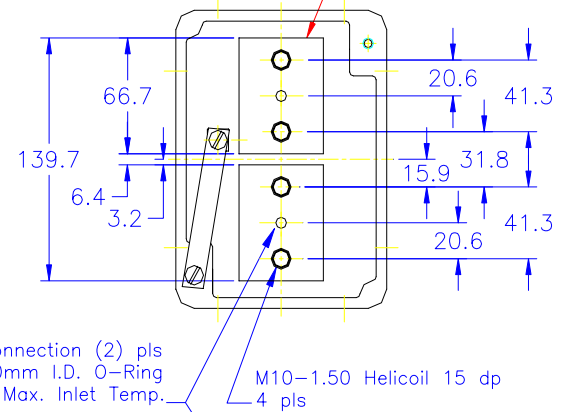
1 1/2 NPT PRI. OPENING 5 PLACES

CASE GROUND LUG

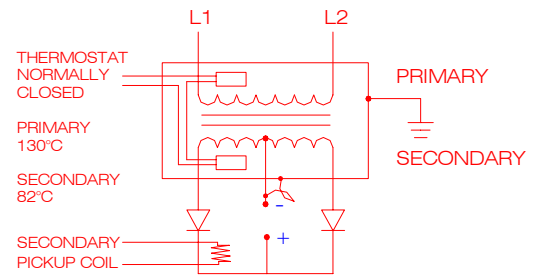
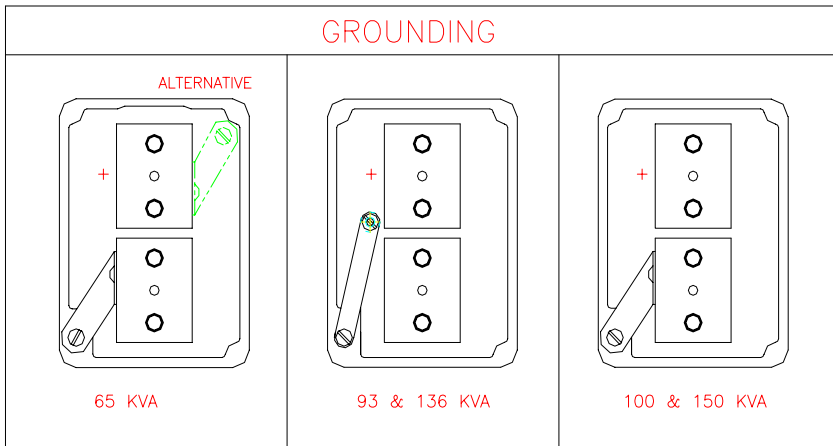
NOTE*
The secondary terminals of this device are intended as an electrical connection only. Applications must be designed to minimize any forces applied to the secondary terminals, this can be accomplished by transferring forces to a structural member.



"+" PAD, WATER IN FOR INVERTER UNITS



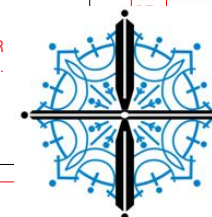
GROUNDING



TRANSFORMER CASE MUST BE GROUNDED. TRANSFORMER WILL BE SHIPPED WITH A JUMPER CONNECTING SECONDARY CENTER TAP TO CASE. USER MUST PROVIDE APPROPRIATE GROUNDING OF SECONDARY CIRCUIT. FOR APPLICATIONS ABOVE A 20% DUTY CYCLE, CONTACT ROMAN MANUFACTURING FOR ASSISTANCE.

All dimensions in Millimeters

K	CORRECTED MTG HOLE DIMS 101.6 was 101.2 50.8 was 50.6	GMA MS	09Aug05
J	CORRECTED SEC PAD HELICOIL DEPTH, WAS 20mm, NOW 15mm <td>TVD SFR <td>17AUG04</td> </td>	TVD SFR <td>17AUG04</td>	17AUG04
I	CORRECTED KVA IDENTIFICATION LABEL TO SHOW CORRECT COLORS <td>TVD SFR <td>17JUNE04</td> </td>	TVD SFR <td>17JUNE04</td>	17JUNE04
H	ADDED WATER IN NOTE FOR INVERTER UNITS <td>SFR SFR <td>15MAR04</td> </td>	SFR SFR <td>15MAR04</td>	15MAR04
G	ADDED SCHEMATIC FOR INVERTERS CHANGED 150 KVA MODEL NUMBER <td>SFR SFR <td>08MAR04</td> </td>	SFR SFR <td>08MAR04</td>	08MAR04



T. J. SNOW CO.

120 Nowlin Lane • P.O. Box 22847
Chattanooga, TN 37421
Phone: (423) 894-6234 • Fax: (423)892-3889
welders@tjsnow.com or www.tjsnow.com