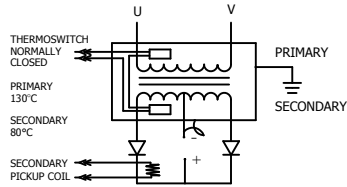
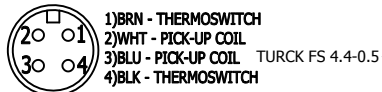


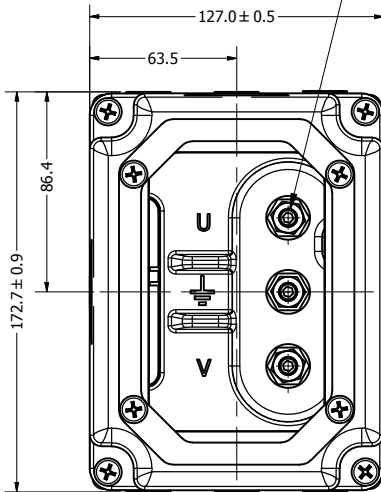
KVA @ 20% DUTY CYCLE	MODEL NUMBER	KVA @ 50% DUTY CYCLE	PRI V / FREQ	V/SEC	URNS RATIO	MAX. Δ P	FLOW RATE	MAX WEIGHT
158	TDC-5583	100	650/1000	9.0	72:1	10 PSI (.69 BAR)	6 LPM	15 KG



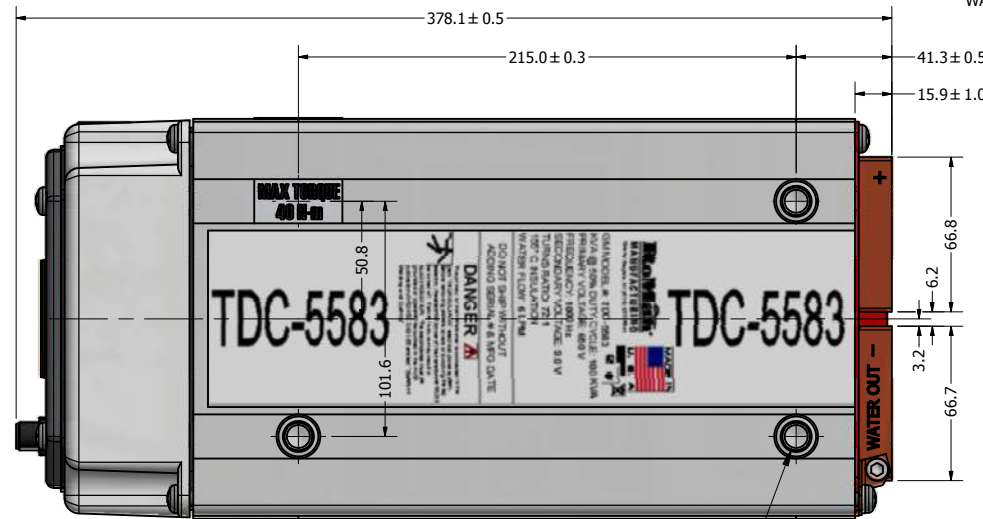
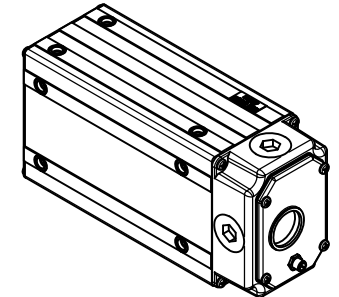
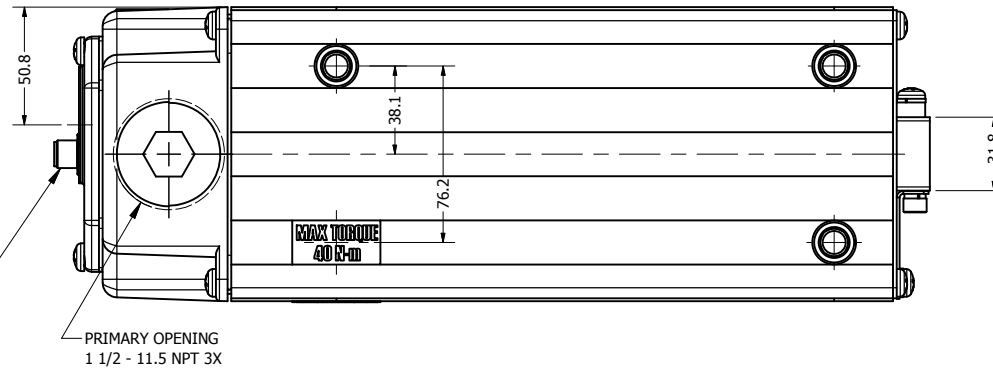
TRANSFORMER CASE MUST BE GROUNDED. TRANSFORMER WILL BE SHIPPED WITH A JUMPER CONNECTING SECONDARY CENTER TAP TO CASE. USER MUST PROVIDE APPROPRIATE GROUNDING OF SECONDARY CIRCUIT. FOR APPLICATIONS ABOVE A 20% DUTY CYCLE, CONTACT ROMAN MANUFACTURING FOR ASSISTANCE.



PRIMARY CONNECTION
M8x1.25 - 6g STUD 3X

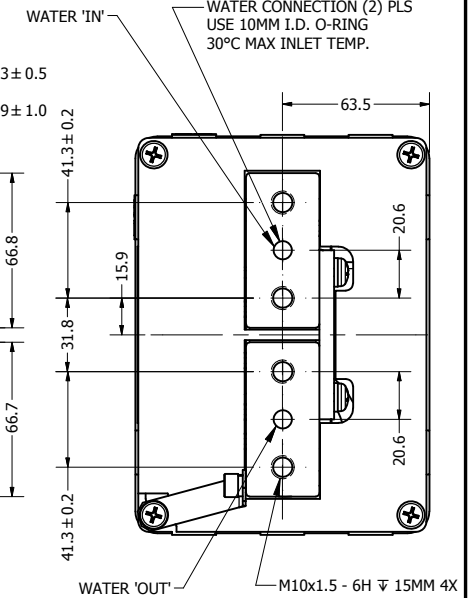


VIEW SHOWN WITH
COVER REMOVED



MOUNTING HOLES


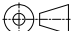
□ Ø11.5MM ▽ 4.5MM
M10x1.5 - 6H ▽ 13.5MM 16X
MAX TORQUE 40 N·m



NOTE:
The secondary terminals of this device are intended as an electrical connection only. Applications must be designed to minimize any forces applied to the secondary terminals, this can be accomplished by transferring forces to a structural member.

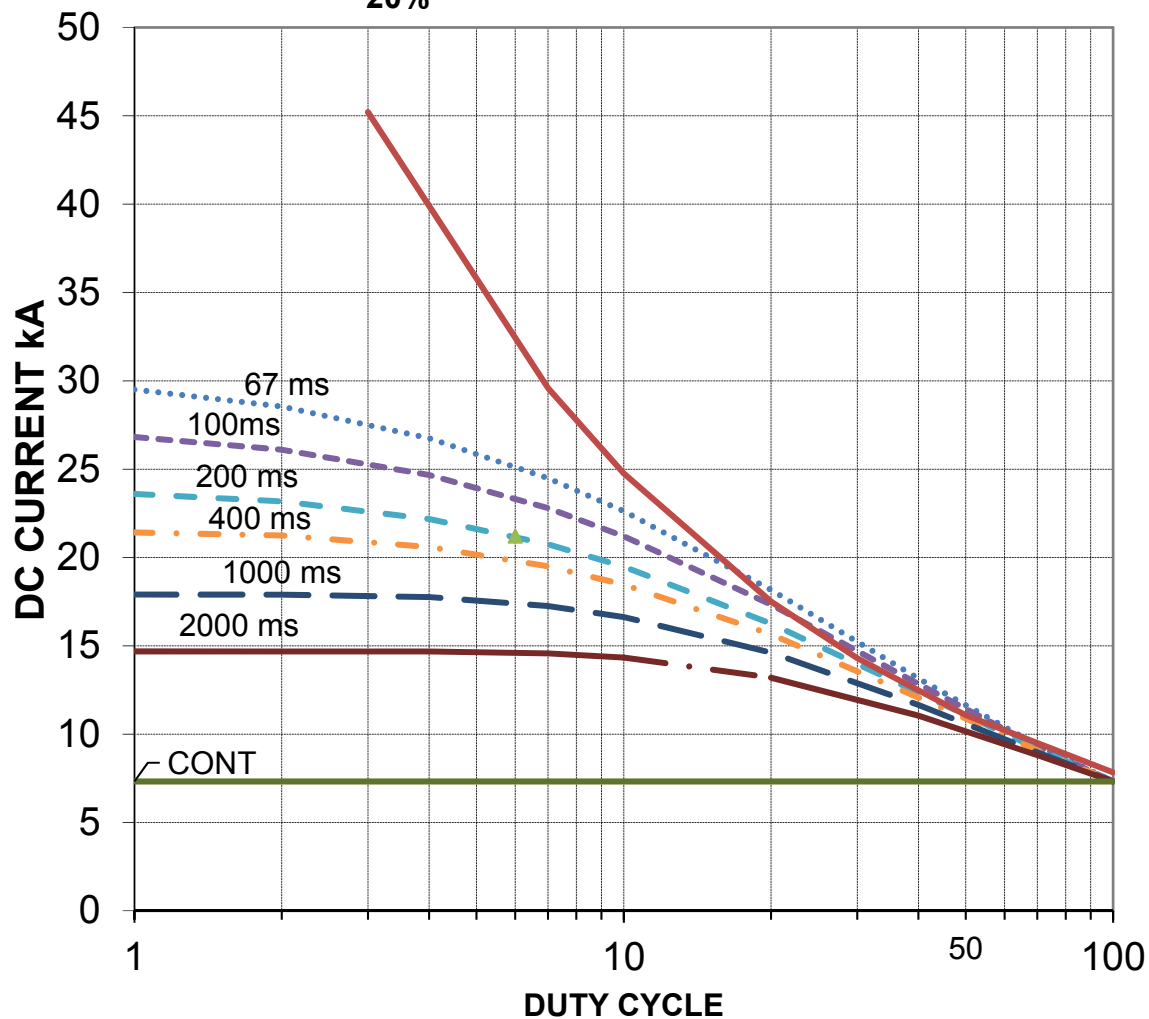
NOTE:
SEE RC-5583 FOR RATING CURVE
SEE LC-5583 FOR LOAD CURVE

ALL DIMENSIONS IN MILLIMETERS

V	REVERSED WATER IN AND OUT	BCC	RD	10/15/2018
U	ADDED LABEL	BCC	KLY	10/5/2018
T	UPDATED MOUNTING HOLE CALL OUT	BCC	RD	9/28/2018
REV	DESCRIPTION			DATE
© 2017 Copyright RoMan Manufacturing. THIS DRAWING AND ALL THE INFORMATION AND TECHNOLOGY IN IT ARE EXCLUSIVE, CONFIDENTIAL AND PROPRIETARY TO RoMan MANUFACTURING, INC. THIS DRAWING IS OWNED BY RoMan MANUFACTURING, INC., AND UNLESS SPECIFICALLY AUTHORIZED IN WRITING, NO COPIES SHALL BE MADE OF THIS DRAWING, AND SHALL BE USED ONLY FOR THE LIMITED PURPOSE FOR WHICH IT IS DISCLOSED AND ONLY TO THE BENEFIT OF RoMan MANUFACTURING, INC., AND IT AND ANY COPIES, AUTHORIZED OR NOT, SHALL BE IMMEDIATELY RETURNED UPON ANY REQUEST THEREFOR.				
SCALE:	NONE			
DATE:	2/17/2005	DESIGNER:	rbowerman bconner	
		APPROX WEIGHT:	N/A	
POWER SUPPLY				
				DRAWING NUMBER: 5583-1

Rating Curve for RoMan TDC 5583 , 1 coolant circuits at 1.585 GPM minimum (6.0 LPM) per circuit, 100 kVA @ 50% duty cycle and 9.03 VDC (transformer). 30 C max coolant inlet temp, 10 million weld life expectation at these conditions, Contact RoMan if duty cycle exceeds 20%

- 67 ms
- 100ms
- - - - 200 ms
- . . - 400 ms
- - - - 1000 ms
- 2000 ms
- CONT
- transformer
- ▲ sample point, 0.2 s weld time, 6 % duty
- Series10



Rectifier % duty cycle is based on shortest time from beginning of one weld to beginning of next weld.

Transformer % Duty cycle is the total "On" time in 1 minute.