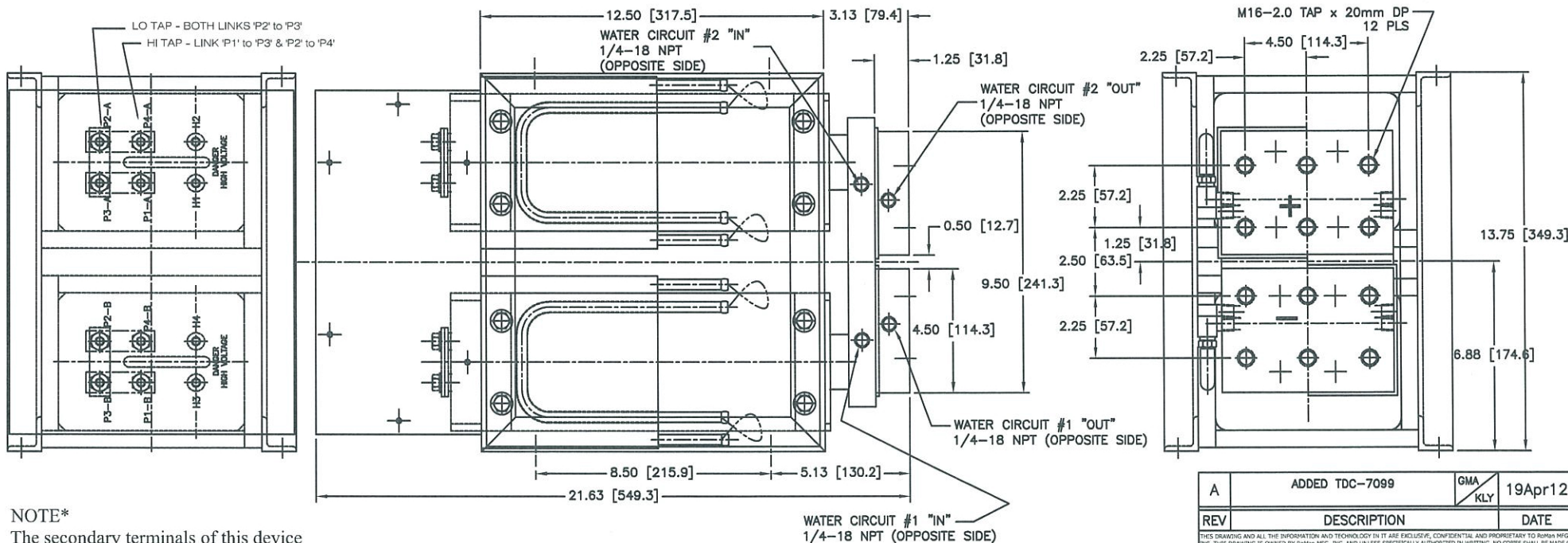
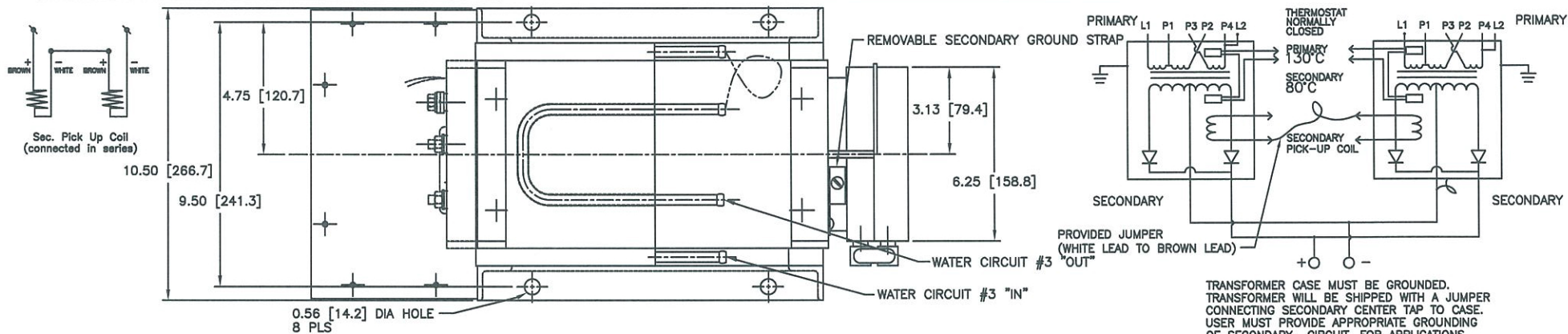


COOLING REQUIREMENTS:

Circuits #1 & #2 7.5 LPM PER CIRCUIT @ 30° C MAX
 Circuit #3 (Core Cooling Plates) 3.8 LPM @ 30° C MAX
 18.8 LPM TOTAL

KVA @ 50% DC	MODEL NUMBER	PRIMARY VOLT/FREQ	SECONDARY VOLTAGE		TURNS RATIO		EST. WEIGHT LBS	FLOW RATE LPM
			TAP 1	TAP 2	TAP 1	TAP 2		
320	TDC-7015	650V/1000Hz	9.0	13.0	72:1	50:1	250	18.8
320	TDC-7021	800V/1000Hz	9.09	13.11	88:1	61:1	250	18.8
320	TDC-7099	500V/1000Hz	9.0	13.1	55:1	38:1	250	18.8



RATING CURVE RC-5874
 DIMENSIONS = INCH [MM]

A	ADDED TDC-7099	GMA KLY	19Apr12
REV	DESCRIPTION	DATE	
THIS DRAWING AND ALL THE INFORMATION AND TECHNOLOGY IN IT ARE EXCLUSIVE, CONFIDENTIAL AND PROPRIETARY TO ROMAN MFG, INC. THIS DRAWING IS OWNED BY ROMAN MFG, INC. AND UNLESS SPECIFICALLY AUTHORIZED IN WRITING, NO COPIES SHALL BE MADE OF THIS DRAWING, AND SHALL BE USED ONLY FOR THE LIMITED PURPOSE FOR WHICH IT IS DISCLOSED AND ONLY TO THE BENEFIT OF ROMAN MFG, INC. AND IT AND ANY COPIES, AUTHORIZED OR NOT, SHALL BE IMMEDIATELY RETURNED UPON ANY REQUEST THEREOF.			
SCALE:	NONE	DRAWN BY:	GMA
DATE:	01Sep11	WEIGHT:	
POWER SUPPLY			
DRAWING NUMBER:			7015-1